

## EL-200 ASSEMBLY INSTRUCTIONS

### TOOLS REQUIRED FOR ASSEMBLY

Electric Hand Drill, 3/8" magnetic hex bit, 3/8" Crescent Wrench, Tape Measure.

### BEFORE ASSEMBLING THE RACK

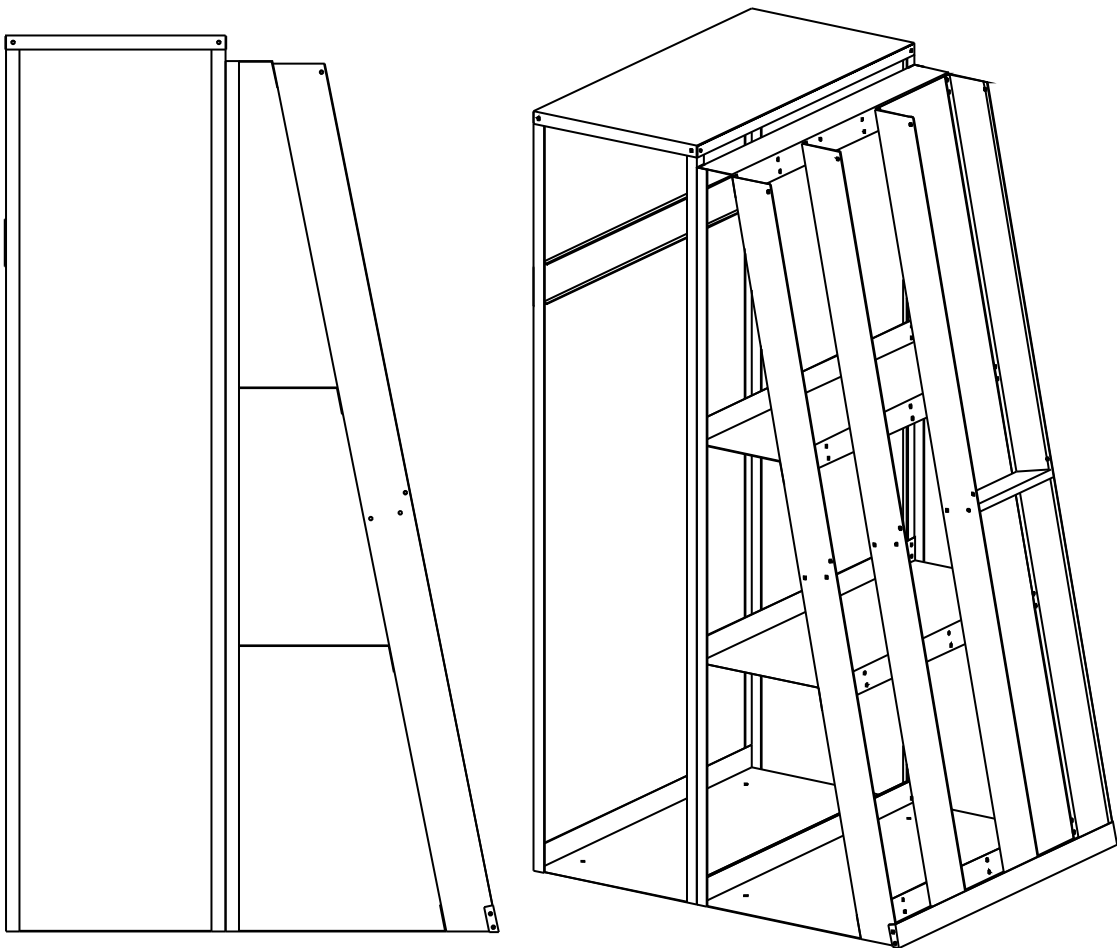
Read through the assembly instructions to familiarize yourself with the order in which the parts are assembled.

We suggest that you clear & vacuum the area where the bench is to be assembled.

It is important that the bench is assembled in the same sequence as instructed.

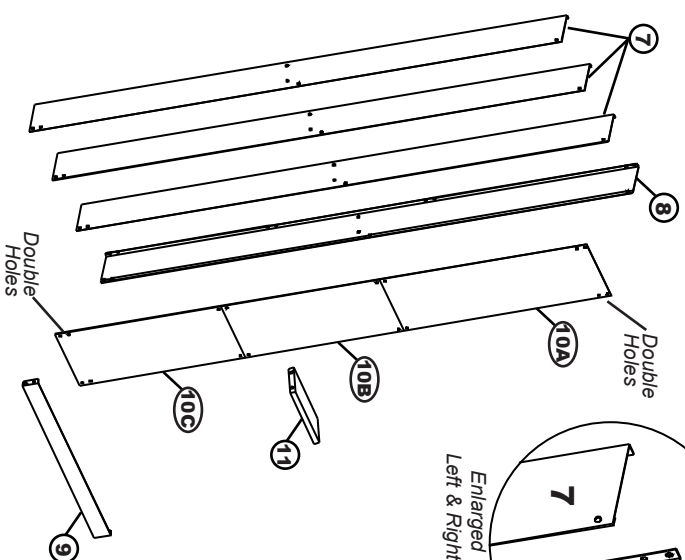
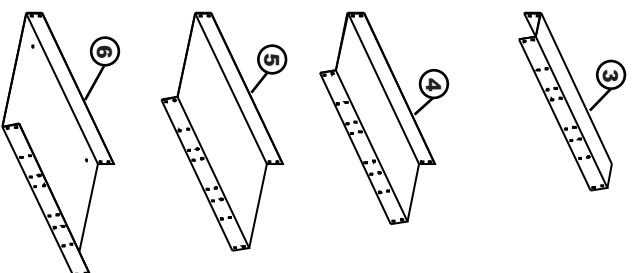
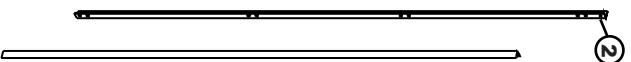
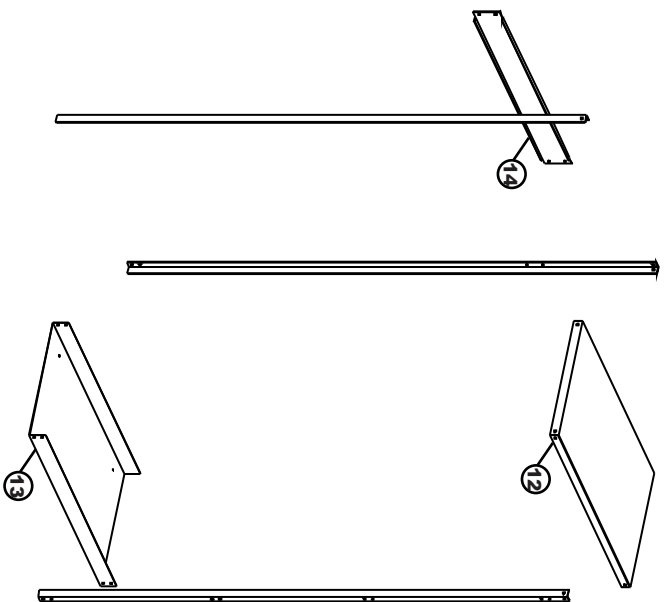
### HARDWARE

All assembly hardware is provided. Floor Anchor hardware is not provided.



### **WARNING!**

THIS RACK MUST  
BE FLOOR  
ANCHORED



#	Qty.	Description
1	2	Back Support Angle (95.25")
2	4	Back Support Angle (98")
3	1	Top Cap
4	1	Shelf A
5	1	Shelf B
6	1	Bottom Pan
7	3	Left Upright
8	1	Right Upright
9	1	Retainer Rail
10A	1	Top Shorts Panel (37.875")
10B	1	Middle Shorts Panel (28.625")
10C	1	Bottom Shorts Panel (29.875")
11	1	Shorts Shelf
12	1	Top Cap 2
13	1	Bottom Pan 2
14	1	Back Support

## STEP 1

Identify components using the illustration above.

Caution - It is important to orient the back support angles (part #1) correctly. Measure the distance from one end to the center of the third hole.

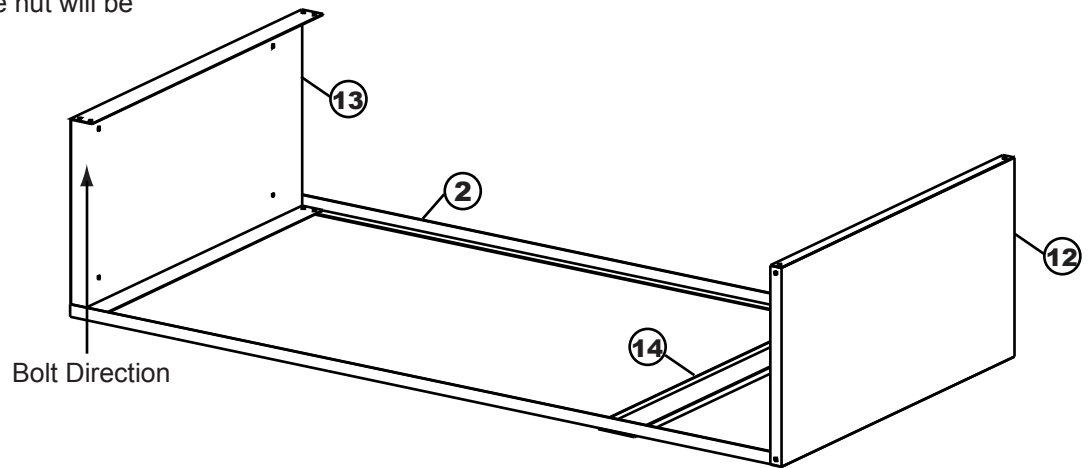
The distance from the top of the upright to the third hole is 33-1/2", from the bottom to the third hole is 32".

All required hardware will be 1/4-20 x 3/4" bolts and 1/4-20 lock nuts.



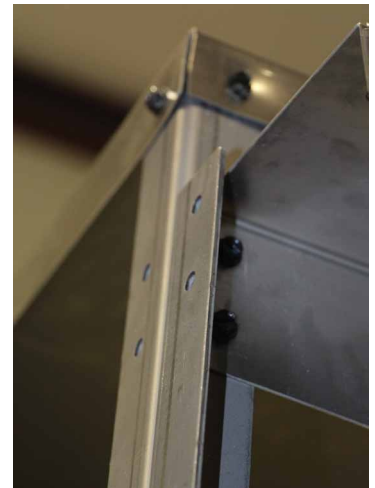
## STEP 2

Lay the 98" Back support angles (2) down on the floor as shown below. Attach the back support (14) to the back side of the uprights. Next attach the bottom pan (13) and top cap (12) to the uprights. The bolts run up through the angle & into the bottom pan (the nut will be on the shelf side of the rack).

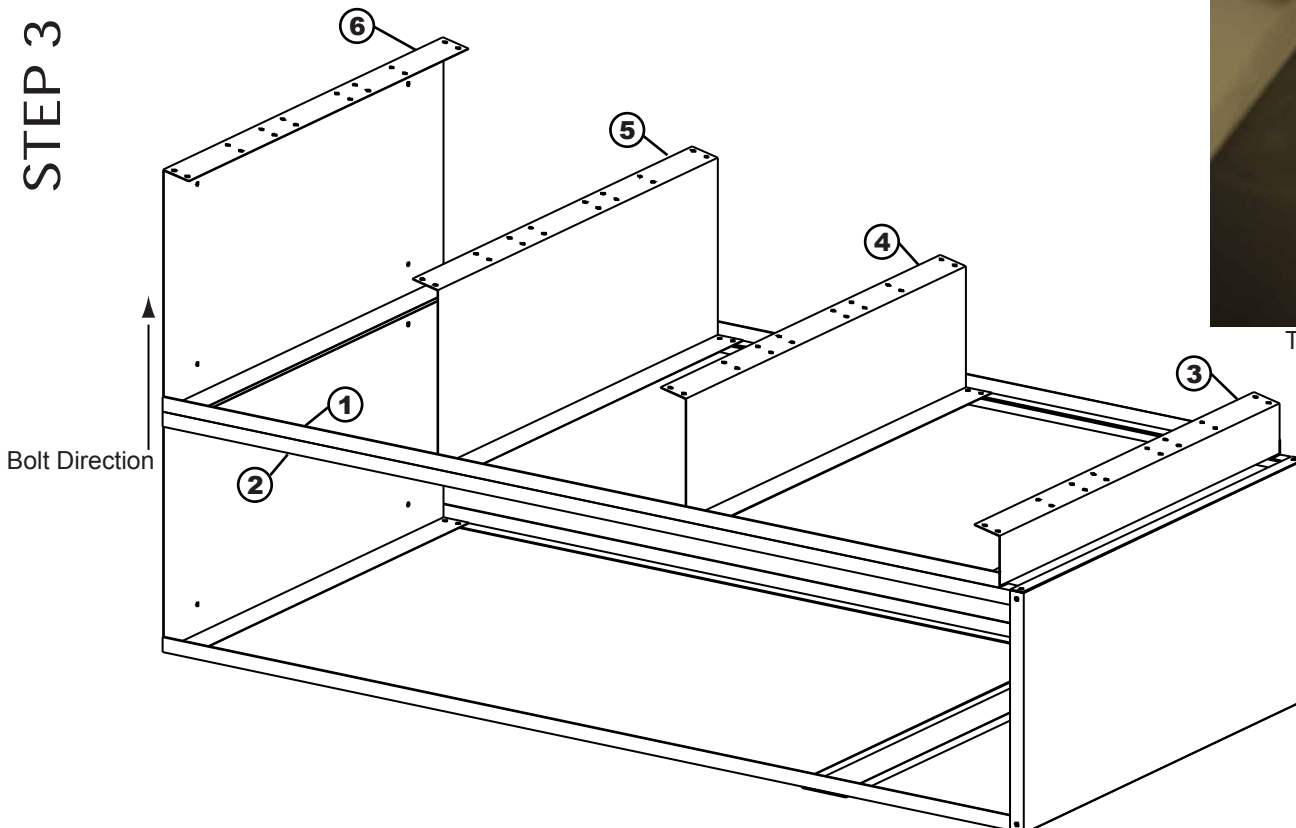


Place two 98" Back support angles (2) onto your partial assembly. Next set the 95.25" support angles (1) in place on the 98" angles. Orient as shown in the photo. Starting at the top, attach all pans to the angles as shown. Your bolts will run through both sets of angles and the shelf.

CAUTION: orient the shelves exactly as shown above.



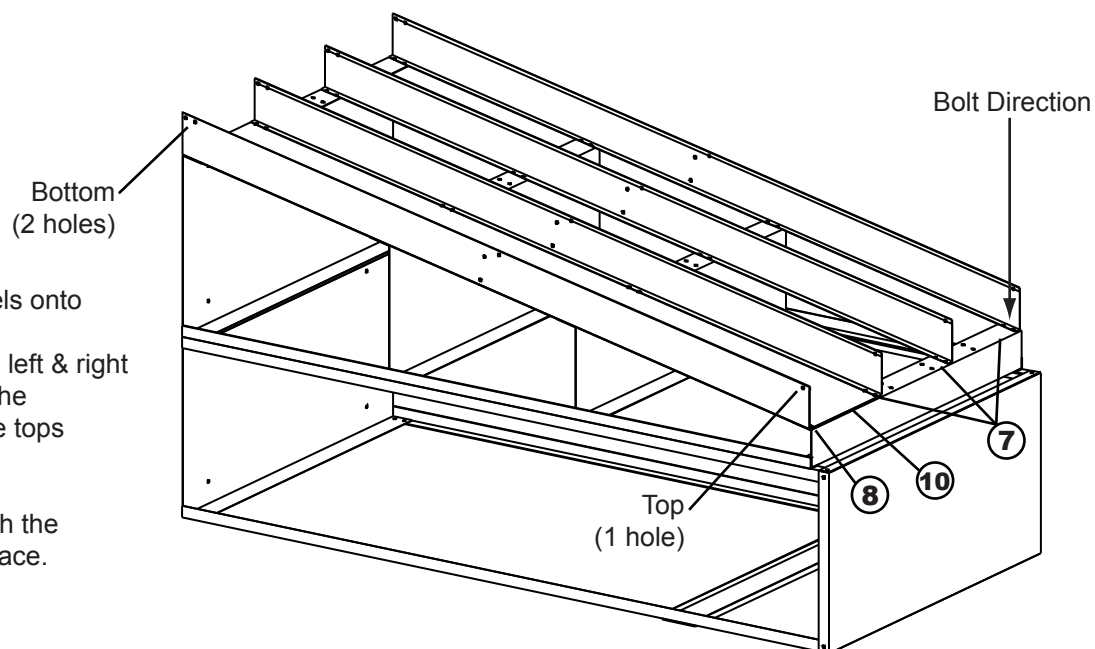
## STEP 3



## STEP 4

Set (#10A-C) shorts panels onto the shelves.  
Attach the (3- #7 & 1- #8) left & right uprights. The bottom of the uprights have 2 holes, the tops have just 1.

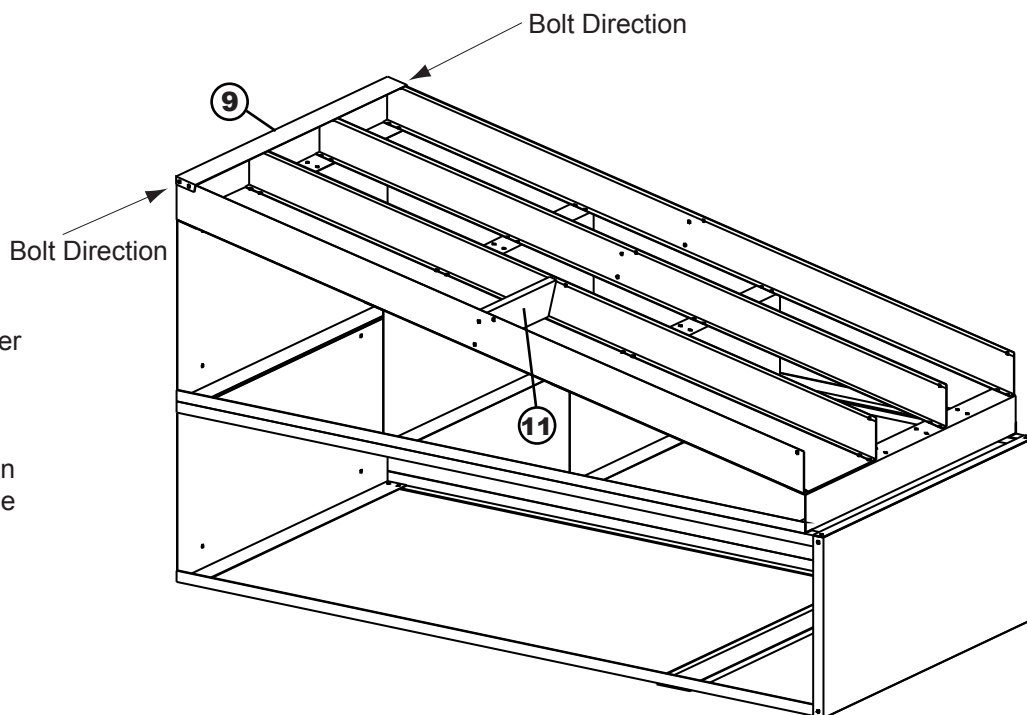
Run the bolt down through the upright, into the shelves face.



## STEP 5

Attach the (#9) retainer rail. Bolts run through the retainer rail, into the uprights.

Attach (#11) Short Shelf to uprights (#8 & #7). Bolts run through the uprights, into the shelf



**WARNING!**

THIS RACK MUST  
BE FLOOR  
ANCHORED