

Rolling Rack

TOOLS REQUIRED FOR ASSEMBLY

Socket set and ratchet, open end wrenches, tape measure.

BEFORE ASSEMBLING THE RACK

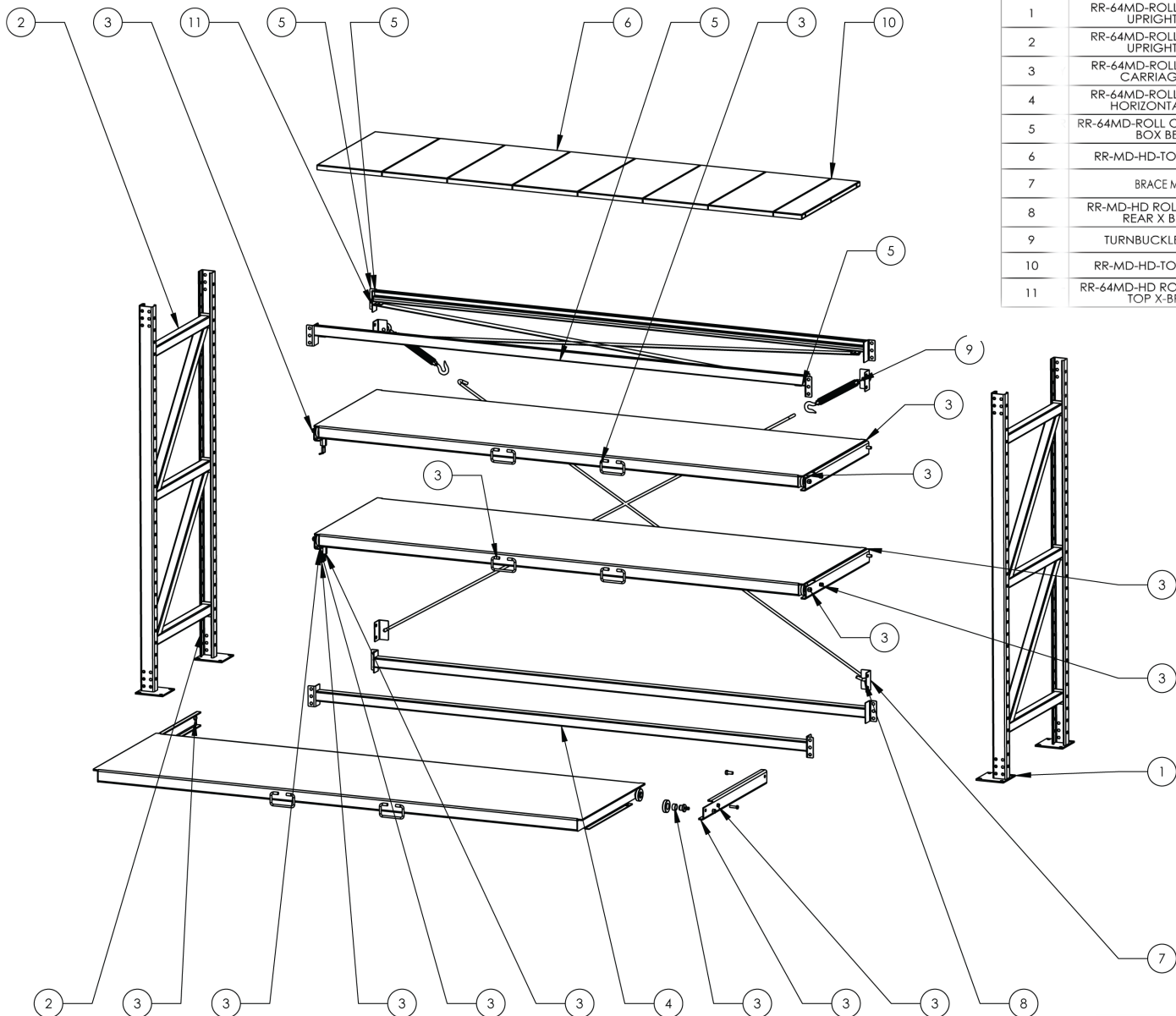
Read through the assembly instructions to familiarize yourself with the order in which the parts are assembled.

We suggest that you clear & vacuum the area where the rack is to be assembled.

It is important that the unit is assembled in the same sequence as instructed.

HARDWARE

All assembly hardware is provided.

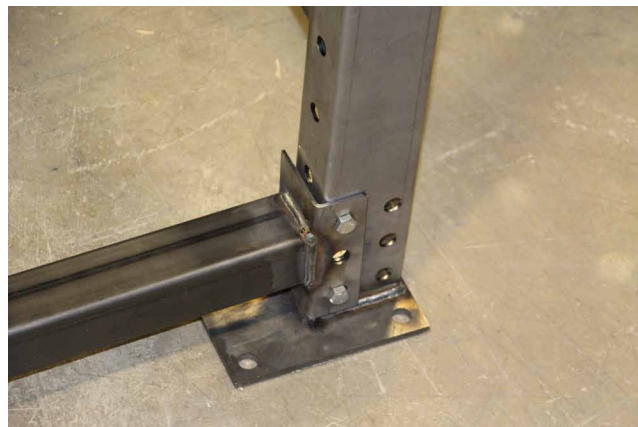


ITEM NO.	DESCRIPTION
1	RR-64MD-ROLL OUT RACK UPRIGHT ASM
2	RR-64MD-ROLL OUT RACK UPRIGHT ASM
3	RR-64MD-ROLL OUT SHELF CARRIAGE ASM
4	RR-64MD-ROLL OUT RACK HORIZONTAL BEAM
5	RR-64MD-ROLL OUT RACK UPR BOX BEAM
6	RR-MD-HD-TOP DECK_50
7	BRACE MOUNT
8	RR-MD-HD ROLL OUT RACK REAR X BRACE.
9	TURNBUCKLE 2998T55
10	RR-MD-HD-TOP DECK_50
11	RR-64MD-HD ROLL OUT RACK TOP X-BRACE

STEP 1

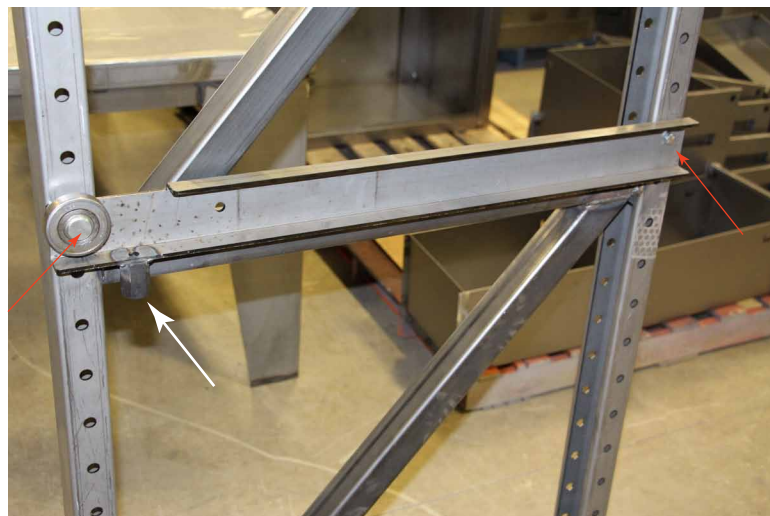
Note: Assembly of the rack will require assistance.

Stand the racks uprights so the floor anchor tabs are pointing towards the inside of the rack as pictured. Begin by bolting the two upper and two lower horizontal main supports to the uprights into the series of holes as pictured. Bolt together using 1/2" x 1" hex head bolts and lock nuts. Three per end. Hand tighten till all bolts installed, then tighten.



STEP 2

Install the rails to the inside edges of the upright supports at their desired heights. Orient the rails as shown. Note that half the rails will have an additional threaded fitting on the bottom of the rail (See White arrow). These will all be positioned on the left hand side of the rack. Spacing the shelves - top, center, and bottom is recommended. The mounting location at the rear of the rack is attached using a 1/2" x 1" hex head bolt and lock nut. The front mounting location is bolted in place using the front roller and locknut.



STEP 3

On the back side of the uprights attach the four turn-buckle mounting tabs using (2) 1/2" X 1" hex head bolts and lock nuts per tab. Position in the sets of holes below the upper horizontal support and above the lower horizontal support as shown in the picture.



STEP 4

Install the cross strapping at the top of the rack. Attach to the welded on tabs on the insides of the upper horizontal supports as indicated by the red arrows. Use 1/2"x1" hex head bolts and lock nuts.



STEP 5

Attach the turnbuckles to the upper tabs on the back side of the rack. Use a 1/2"x1" hex head bolt, fender washer, and lock nut. See photo for bolt/washer/nut orientation.

Once both turnbuckles have been bolted in you can hook one end of the bar stock strap into the lower tab and hook the other end to the turnbuckle. Snug up the turnbuckles but do not over-tighten. Using a tape measure check the square of the rack (measured diagonally from top corner to bottom corner till both sides are equal), adjust the turnbuckles as needed till the rack is square. It may be necessary to loosen some of the support bolts to obtain square.

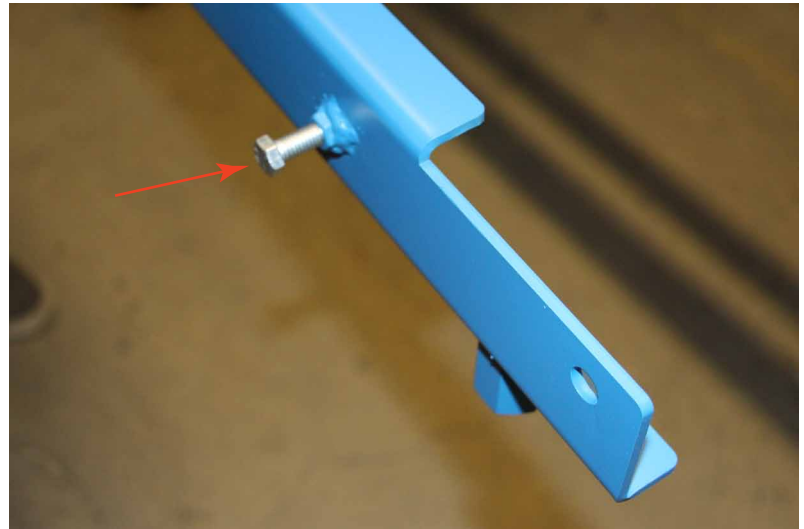


STEP 6

On the sides of the shelf rails there will be a preinstalled nut as pictured. Thread 3/8"x1" bolts into the nuts but just start the bolt into the threads. Once the shelf is inserted into the rail this bolt will be further threaded in and acts as a forward SAFETY stop for the shelf.



3/8" x 1"
Hex Head Bolt



On the underside of the left rail thread in the spring loaded pin on the underside into the threaded fitting. This pin is used to lock the shelf in place when it is fully pushed into the rack.



STEP 7

READ THIS STEP FULLY - DAMAGE OR INJURY CAN OCCUR IF NOT FOLLOWED.

With assistance lift the shelf into the rails as pictured. The pre-attached roller on the back side of the shelf will insert behind the rail roller and into the opening. Once both sides are in carefully push the shelf fully in.

DO NOT SLIDE THE SHELF BACK OUT YET.

Once the shelf has been pushed in thread the 3/8" bolts installed during step 6 further into the rail so they protrude into the rail. The roller of the shelf will hit the bolt and not allow it to go too far forward. **Without the stop bolt protruding into the rail the shelf can tip out of the rail and crash down.**



STEP 8

Insert the fixed upper shelf panels into the upper horizontal supports.

