

ROLLING TOP GREENHOUSE BENCH

TOOLS REQUIRED FOR ASSEMBLY

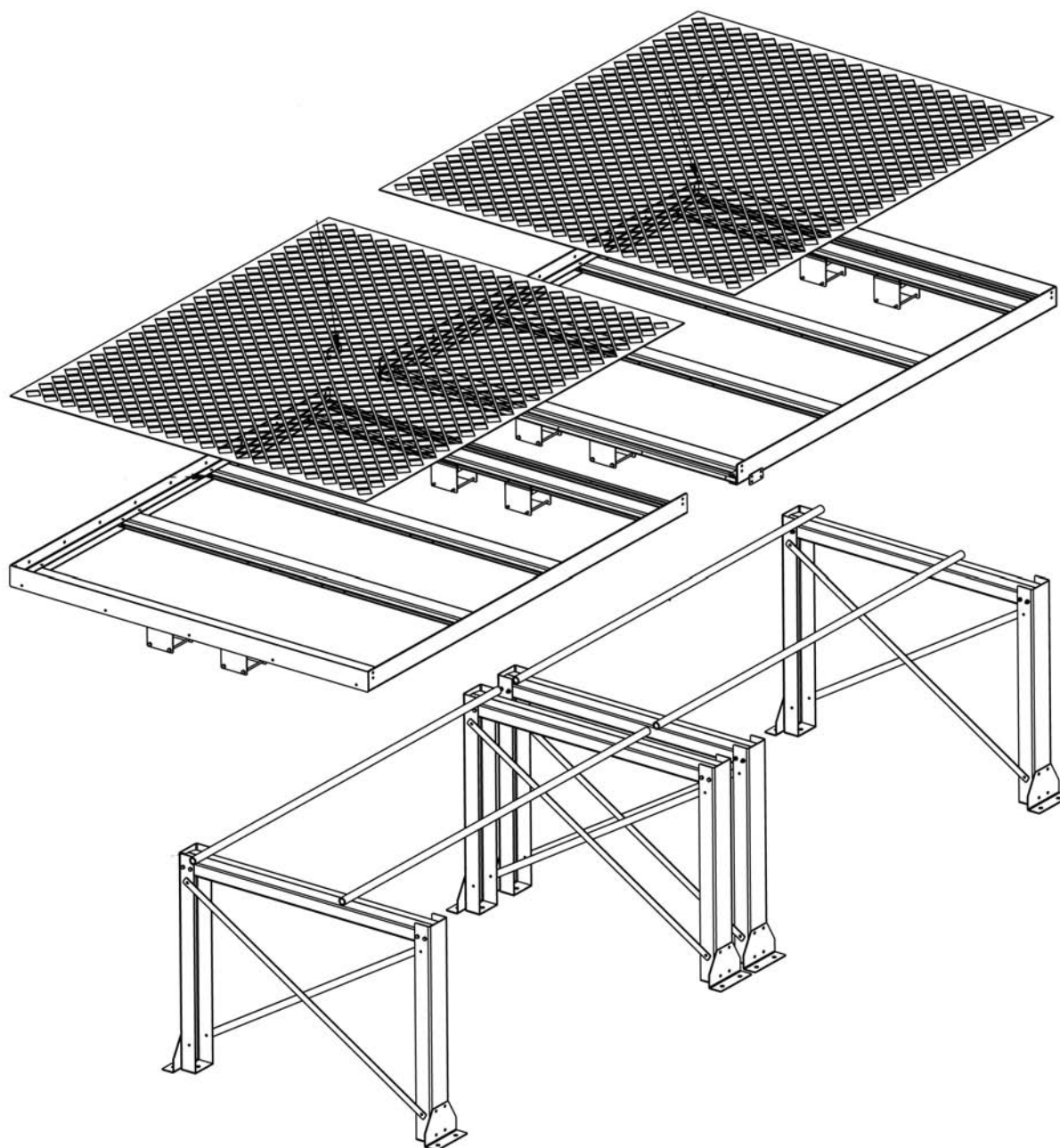
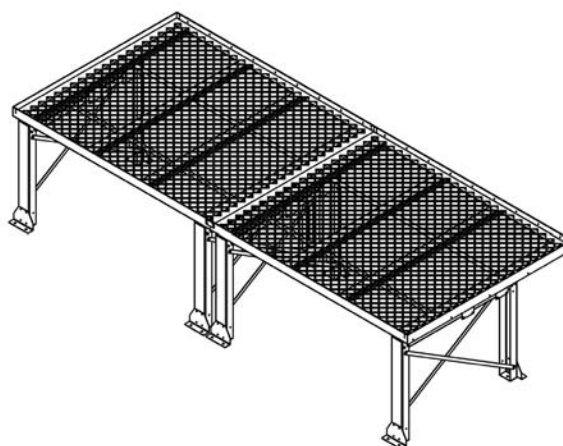
Socket set, Open end wrench set, Phillips bit, Cordless drill with 3/8" socket bit (Magnetic recommended).

BEFORE ASSEMBLY

Read through the assembly instructions to familiarize yourself with the order in which the parts are assembled. We suggest that you clear & vacuum the area where the bench is to be assembled. It is important that the bench is assembled in the same sequence as instructed.

HARDWARE

All assembly hardware is provided.



STEP 1

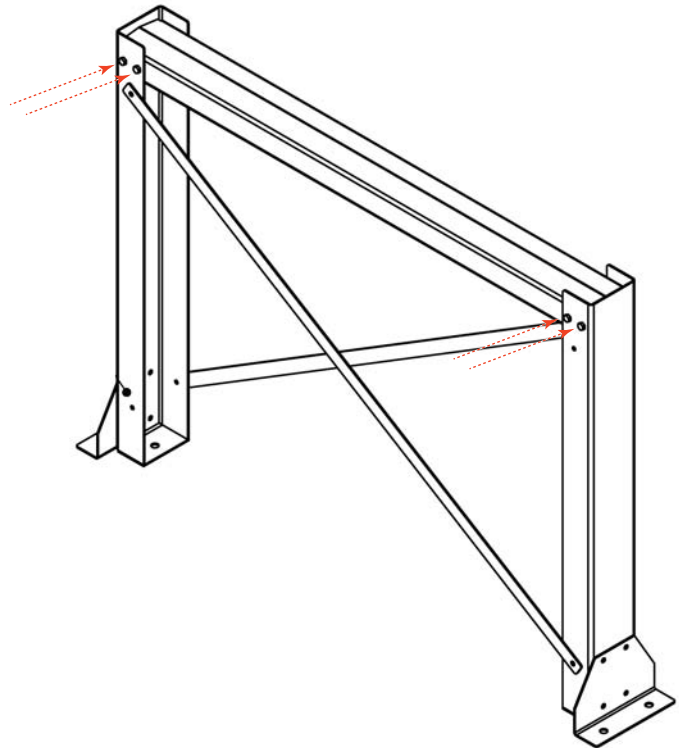
Bolt the top leg rail to the vertical leg supports using (4) 5/16"-18 x 4-1/2" hex bolts with Nylock Nuts. Locations are indicated by the red arrows in the illustration.



5/16-18 x 4-1/2"
Hex Head Bolt



Nylock Nut



STEP 2

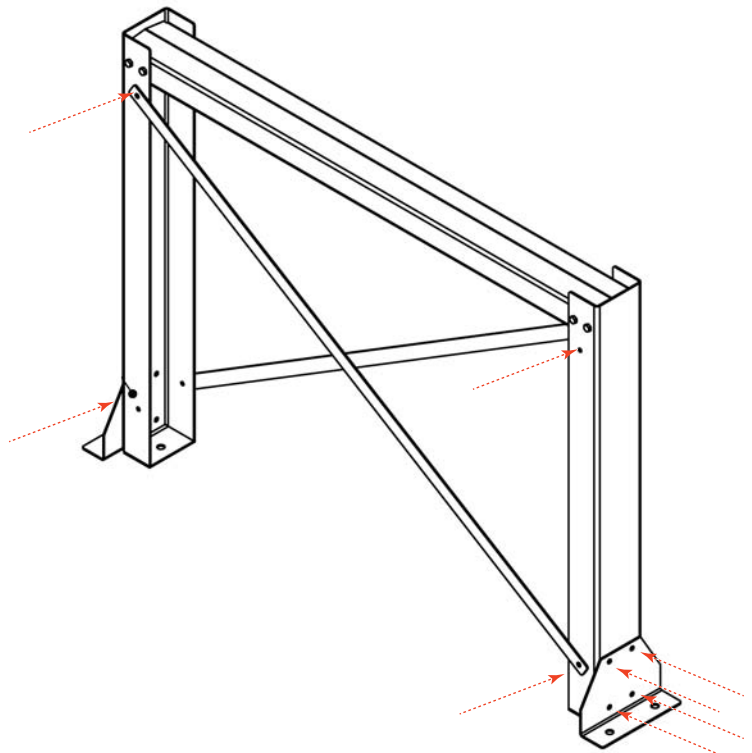
Bolt the floor anchor brackets using (4) 5/16"-18 x 1/2" hex bolts with Nylock Nuts per bracket. Bolt the X leg braces in place with (4) 5/16"-18 x 1/2" hex bolts with Nylock Nuts. Locations are indicated by the red arrows in the illustration. This will complete the leg section assembly.



5/16-18 x 1/2"
Hex Head Bolt



Nylock Nut



STEP 3

One of the top section assemblies has been shipped assembled. Use this as reference for part orientation and assembly of the remaining top sections.

Attach cross support pieces to the front and back side table rail channels using (20) 1/4"-20 x 1/2" Flat head screws and nylock nuts per top assembly. See red arrows for mounting locations for each side.



STEP 4

Attach one end cap on each top assembly using (5) 1/2" Hex head self tapping screws. Pilot holes are drilled into the already mounted C channels for positioning. See photo.



STEP 5

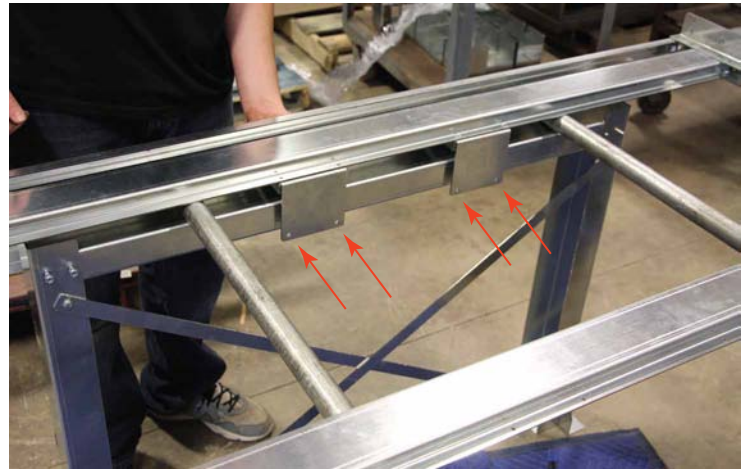
Attach the 4 U channel guides on the bottom side of the table. Use (4) 1/2" Hex head self tapping screws per bracket. Pilot holes are drilled for positioning. View the bracket locations on the exploded view of the first page or reference the assembled top.



STEP 6

Position leg assemblies upright and space them apart so tables guide brackets will set over the top leg rails. Once positioned lay two of the pipe sections on the top leg rail. With assistance, set the table in position on the legs. Make sure the pipe sections are oriented as shown in the photo with the table guide brackets.

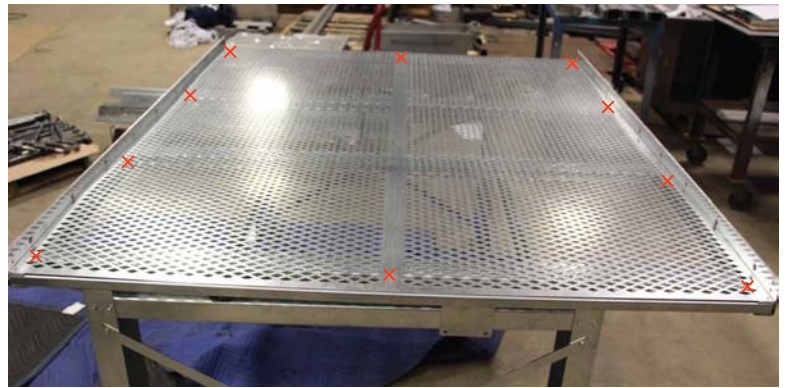
Once positioned use (8) 5/16-18 x 5-1/2" bolts with Nylock nuts and insert them through the table guide brackets as indicated by the red arrows.



STEP 7

Insert the grate into the frame of the table. The expanded metal sometimes has a tendency to not lay flat. You can use the supplied 1/2" Hex head self tapping screws to help aid in holding the metal sheet flat. We recommend screwing the sheet around the perimeter of the sheet.

Position the table into its final position. The legs will need to be anchored directly to the floor so the table will be rigid and operate properly, take care that the legs are squared up and there is equal clearance for the table brackets.



STEP 8

Repeat these steps for other tables. If tables are being tied together attach the two sections of tables together with the supplied brackets. Use (4) 5/16-18 x 1/2" bolts with nylock nuts.

