

SRI FLIP TOP WORKSTATION

TOOLS REQUIRED FOR ASSEMBLY

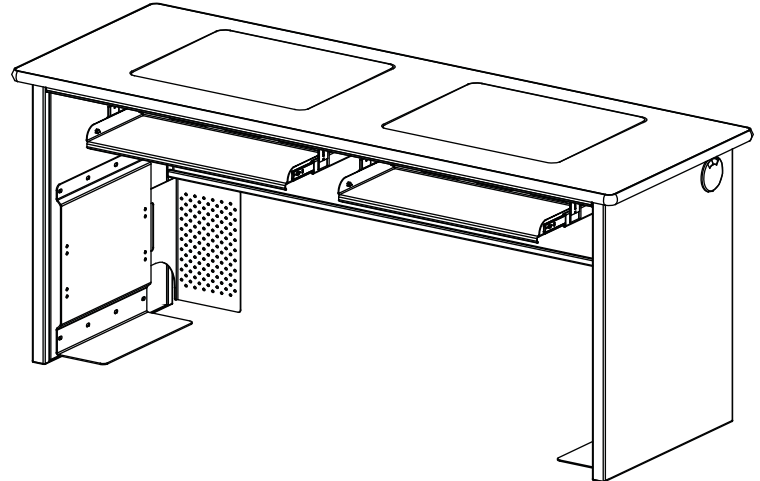
Cordless drill with Phillips head Bit & magnetic extension,
3/8" Magnetic socket bit.

BEFORE ASSEMBLING WORKBENCH

Read through the assembly instructions to
Familiarize yourself with the order in which the
parts are assembled. We suggest that you clear
& vacuum the area where the bench is to be
assembled. It is important that the bench is
assembled in the same sequence as instructed.

HARDWARE & GMI COMPONENTS

All assembly hardware is provided.

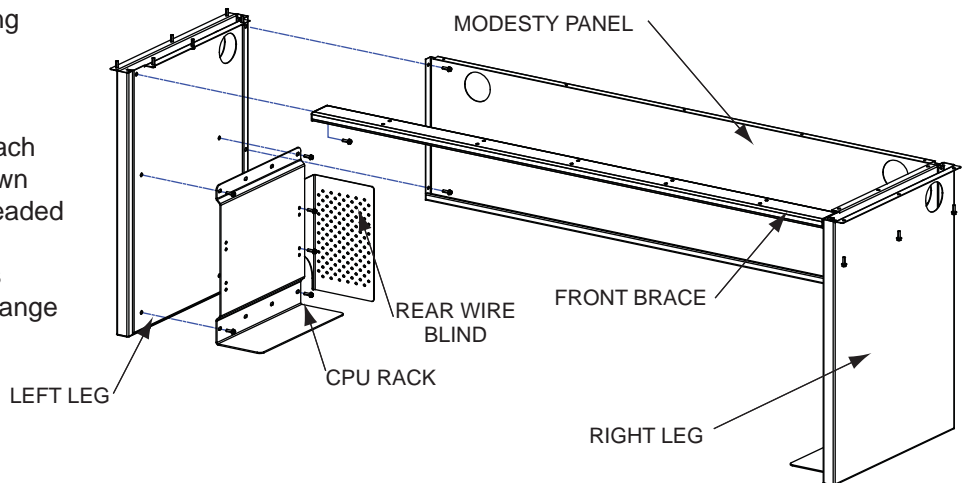


ASSEMBLE BASE COMPONENTS

Attach modesty panel to legs as shown using
the provided 1/4-20 X 1/2" flange head bolts
Next attach the front brace as shown using
the provided same bolts.

CPU RACK & WIRE BLIND

Use 10-32 X 1/2" pan head Phillips to attach
the rear wire blind to the cpu rack as shown
bolting through the CPU rack into the threaded
fasteners installed in the wire blind.
Next, bolt the rack assembly to the leg as
shown using the provided 1/4-20 X 1/2" flange
head bolts.



10-32 X 1/2"
PAN HEAD PHILLIPS



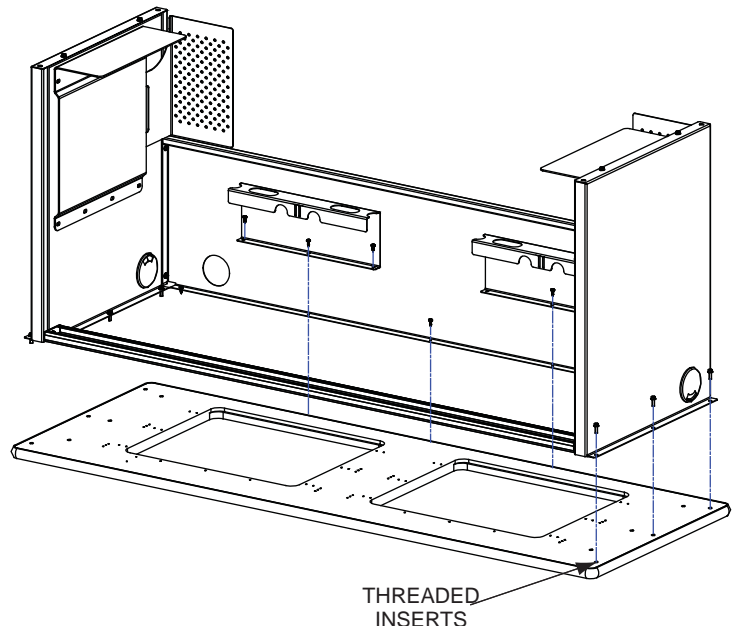
1/4-20 X 1/2"
FLANGE HEAD BOLT

CONNECT TOP TO BASE COMPONENTS

Place the work surface upside down on clean
floor. Position the base over the top as shown so
that the leg holes will align with the pre-installed
Threaded fasteners in the under side of the work
Surface. Attach legs with provided 1/4-20 x 1/2" flange
Head bolts. Use the #14 x 3/4" Lag screws to secure
Through the brace and into the work surface.

WIRE TRAY / MODESTY

Use the #10 x 5/8" SPAX to attach
the wire tray through the provided
holes in the modesty panel and into the work surface
to secure as shown. Depending on the length of the
work station additional holes may be present.



#10 x 5/8" SPAX
COARSE THREAD
PAN HEAD PHILLIPS



1/4-20 X 1/2"
FLANGE HEAD BOLT



#14 x 3/4"
LAG SCREW

THREADED
INSERTS

STEP 1

STEP 2

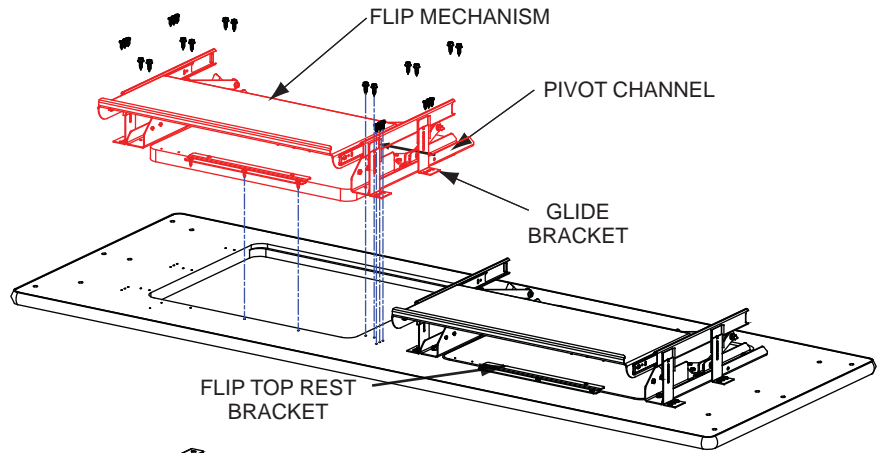
STEP 3

ATTACH THE FLIP MECHANISMS

(**SHOWN WITHOUT BASE ASSEMBLY FOR CLARITY**)

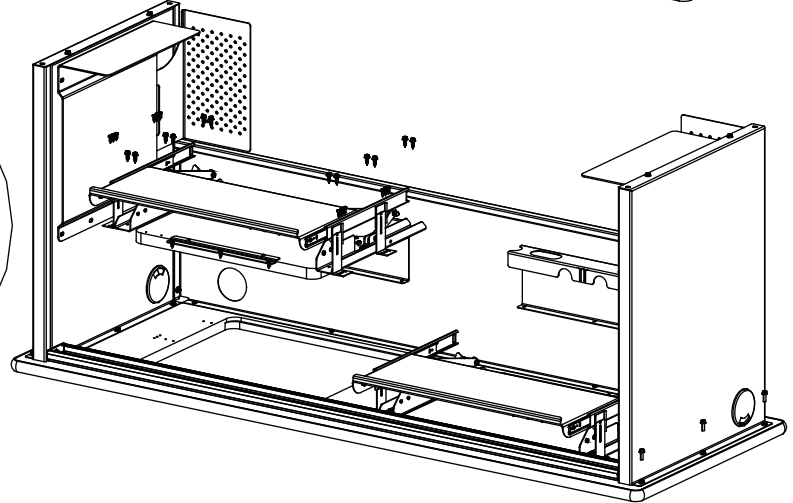
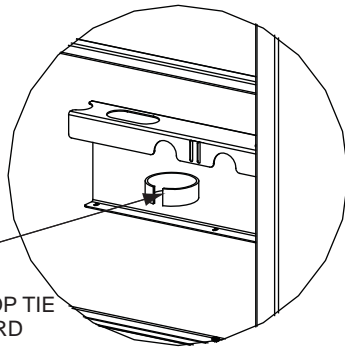
Attach the flip top rest bracket as shown using #10 x 5/8" SPAX coarse thread screw as shown using provided location marks.

Attach the pre-assembled flip mechanism as shown using the provided #10 x 5/8" SPAX coarse thread screw aligning the mechanism with the predrill location holes for the glide attachment and the pivot bracket.



#10 x 5/8" SPAX
COARSE THREAD
PAN HEAD PHILLIPS

VELCRO MONITOR
CABLE RETAINER
WEAVE THROUGH SLOTS
IN WIRE TRAY TO CREATE A LOOP TIE
FOR MONITOR AND KEYBOARD
CABLES.



STEP 4

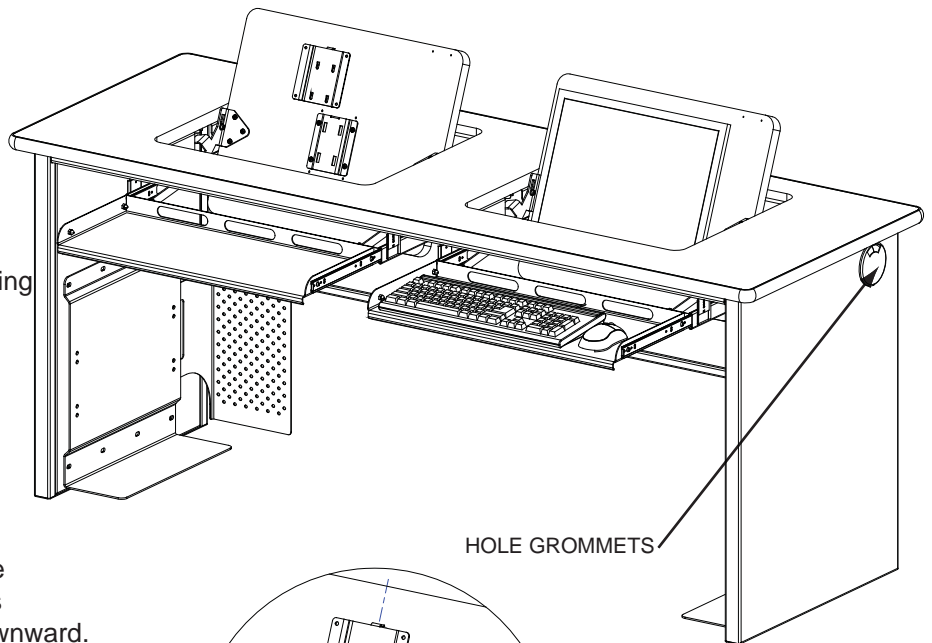
FINAL ASSEMBLY

Carefully flip the workstation right side up. ***REQUIRES 2 PEOPLE***

When flipping the workstation it is best to rotate toward the front to keep the monitor mechanism from freely moving

**** OPTIONAL ****

The use of tape to secure the monitor lid aids greatly in keeping from disrupting the mechanism during this step. Finish by inserting the provided hole grommets.



STEP 5

ATTACH MONITOR

(FIGURE 1)

Attach the VESA mounting bracket to the back of your monitor.

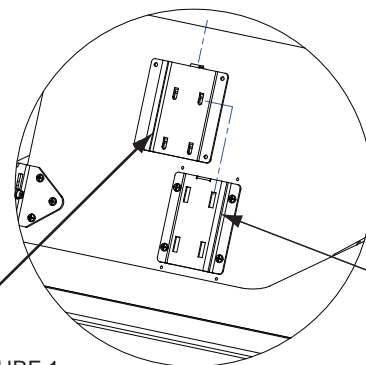
With the VESA bracket mounted to the monitor, guide the mounting plate tabs into the base plate holes and slide downward.

Once in place use 1 provided #10-32 x 1/2" bolt through the top to secure the monitor.

Finally rest your tower PC on the leg of the CPU rack. Use the provided 60" Velcro Strap to secure the tower to the rack by fishing the strap behind the rack and then around the tower.

VESA MOUNTING
BRACKET

FIGURE 1.



BASE PLATE