

Dura-Flex accessories allow you to create a workstation to fit your exact application. The Dura-Flex back supports and accessories will fit on a variety of open style and Dura-Tech series work benches. Choose from our pre-configured selections highlighted on page 79 or configure your own simply by adding the Dura-Flex back support frames to any 60" or 72" station and add the accessories you need. Individual components are illustrated on pages 80 - 81.

Ideal Uses

- Assembly Work Stations
- Technical/Repair Work Benches
- Shipping And Receiving Stations



Dura-Flex components shown on SC-Series Cart



Dura-Flex components will work on a variety of bench and cart applications.



Dura-Flex back support uprights and frames offer maximum flexibility in mounting components.



Adding a power apron strip conveniently puts outlets right at the work station.



Tool panels and plastic bin rails will keep your work station stocked and organized.



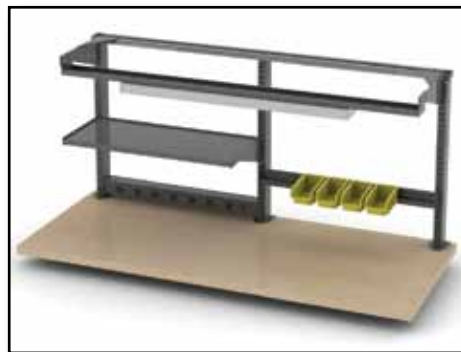
Pre-Engineered Dura-Flex Backs



Configuration One

- Upright Frame Assembly
- (1) 120V x 15 amp Power Apron
- (1) Overhead Light Assembly

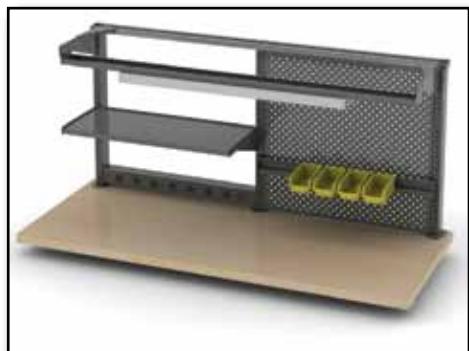
Part Number	Description
DTFX-CFG1-60	Configuration 1 for a 60" w Work Surface
DTFX-CFG1-72	Configuration 1 for a 72" w Work Surface



Configuration Two

- Upright Frame Assembly
- (1) 120V x 15 amp Power Apron
- (1) Bin Rail with (4) Small Bins
- Overhead Light Assembly
- (1) Adjustable Storage Shelf

Part Number	Description
DTFX-CFG2-60	Configuration 2 for a 60" w Work Surface
DTFX-CFG2-72	Configuration 2 for a 72" w Work Surface



Configuration Three

- Upright Frame Assembly
- (1) 120V x 15 amp Power Apron
- (1) Bin Rail with (4) Small Bins
- Overhead Light Assembly
- (1) Adjustable Storage Shelf
- (1) Metal Tool Panel

Part Number	Description
DTFX-CFG3-60	Configuration 3 for a 60" w Work Surface
DTFX-CFG3-72	Configuration 3 for a 72" w Work Surface



Configuration Four

- Upright Frame Assembly
- (1) 120V x 15 amp Power Apron
- (1) Bin Rail with (4) Small Bins
- Overhead Light Assembly
- (2) Adjustable Storage Shelves

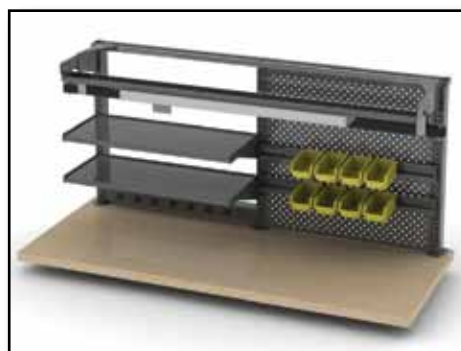
Part Number	Description
DTFX-CFG4-60	Configuration 4 for a 60" w Work Surface
DTFX-CFG4-72	Configuration 4 for a 72" w Work Surface



Configuration Five

- Upright Frame Assembly
- (1) 120V x 15 amp Power Apron
- (1) Bin Rails with (4) Small Bins
- (2) Adjustable Storage Shelves
- Overhead Light Assembly
- Tool Rail
- Tool Trolley

Part Number	Description
DTFX-CFG5-60	Configuration 5 for a 60" w Work Surface
DTFX-CFG5-72	Configuration 5 for a 72" w Work Surface



Configuration Six

- Upright Frame Assembly
- (1) 120V x 15 amp Power Apron
- (1) Metal Tool Panel
- (2) Bin Rails with (8) Small Bins
- (2) Adjustable Storage Shelves
- Overhead Light Assembly
- Tool Rail
- Tool Trolley

Part Number	Description
DTFX-CFG6-60	Configuration 6 for a 60" w Work Surface
DTFX-CFG6-72	Configuration 6 for a 72" w Work Surface



Dura-Flex Individual Components



Dura-Flex Back Support Frames

Base uprights are notched front and back to allow accessories to be mounted to both sides - Uprights are available in a variety of heights - Bases mount to rear of work surface.

- Includes (3) Upright Supports
- (2) Top Rail Supports
- Mounting Plates
- Top Rail End Caps

Part #	Height	Fits Benches	Description
DTFX -60-30	30"	60" Wide	Dura-Flex Back Upright Support Frame
DTFX -60-34	34"	60" Wide	Dura-Flex Back Upright Support Frame
DTFX -60-39	39"	60" Wide	Dura-Flex Back Upright Support Frame
DTFX -72-30	30"	72" Wide	Dura-Flex Back Upright Support Frame
DTFX -72-34	34"	72" Wide	Dura-Flex Back Upright Support Frame
DTFX -72-39	39"	72" Wide	Dura-Flex Back Upright Support Frame

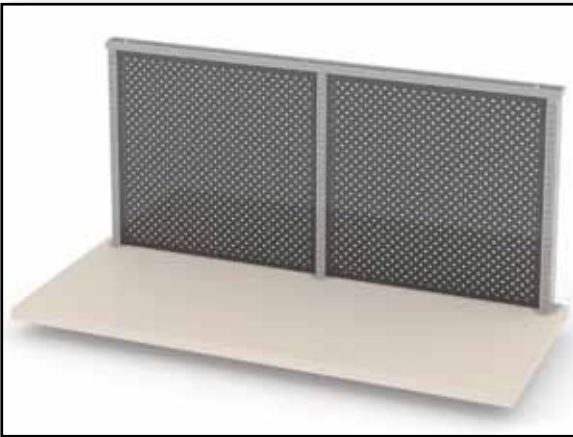


Light Bar

Use for overhead task lighting - Mounts to back supports - 48" Fluorescent task light included - Light only for hardwire applications - Cord and switch includes 9' power cord and on/off switch.

- 48" Fluorescent Task Light
- (2) Light Support Arms
- Light Mounting Rail
- Hardwire or Cord and Plug Option

Part #	Height	Fits Benches	Description
DTFXL -60	30"	60" Wide	Dura-Flex Light For 60" Table - Hardwire
DTFXL -72	34"	72" Wide	Dura-Flex Light For 72" Table - Hardwire
DTFXL -60A	39"	60" Wide	Dura-Flex Light For 60" Table - Cord and Plug
DTFXL -72A	30"	72" Wide	Dura-Flex Light For 72" Table - Cord and Plug

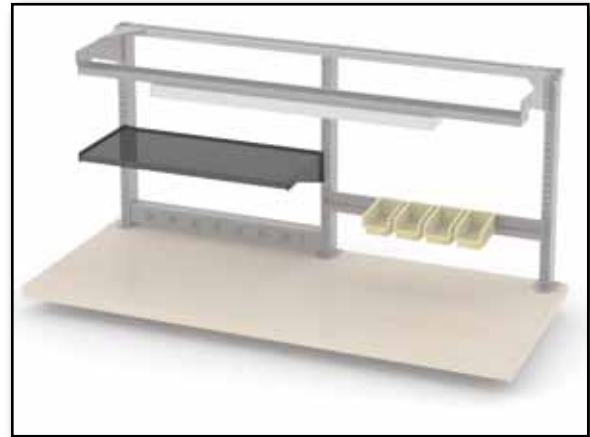


Tool Panel

Tool panel frame mounts to rear of back support frame - Tool boards are available in metal or 1/4" tempered hardboard - Standard round hole pattern - Tool hanger kits sold separately - See page 59.

- Offered in 1/4" Hardboard or Metal
- Standard Round Hole Pattern
- For 60" and 72" Dura-Flex Uprights
- Custom Configurations Available

Part #	Material	Fits Benches	Description
DTBF-PG-60	Hardboard	60"	30" w x 30" h Pegboard Tool Panel
DTBF-PG-72	Hardboard	72"	36" w x 30" h Pegboard Tool Panel
DTBF-PG-60-STL	Steel	60"	30" w x 30" h Steel Tool Panel
DTBF-PG-72-STL	Steel	72"	36" w x 30" h Steel Tool Panel



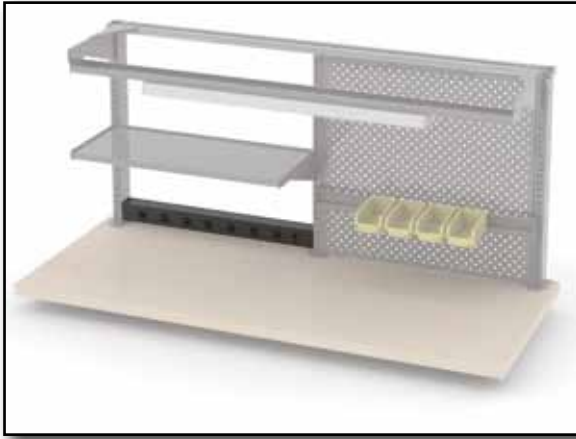
Utility Shelf

12" deep shelf mounts to Dura-Flex back frame - Reversible bracket allows shelf to be mounted at a 0 or 15 degree slant - 16 gauge steel.

- Steel Shelf
- Reversible Mounting Bracket
- Standard 12" Depth
- 50 lb Capacity

Part #	Fits Benches	Description
DFXBS -30	60" Wide	30" w x 12" d Utility Shelf
DFXBS -36	72" Wide	36" w x 12" d Utility Shelf



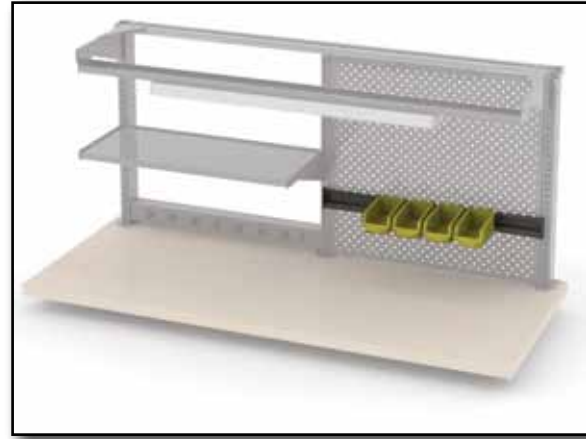


Power Apron

Universal power aprons measure 4" h - Aprons can be used with Dura-Flex or mount directly to work surface - Provides (6) 120V-15 amp outlets with a lighted on/off switch - Provided with a 6' cord & plug.

- Universal Mounting
- Six 120V x 15 amp Outlets
- 6' Cord and Plug
- Lighted On/Off Switch

Part #	Description	Part #	Description
DTPA-30	30" Power Apron	DTPA-60	60" Power Apron
DTPA-36	36" Power Apron	DTPA-72	72" Power Apron
DTPA-48	48" Power Apron	DTPA-84	84" Power Apron



Plastic Bin Rail/Bins

Bin rails mount between Dura-Flex uprights - One bin rail will accommodate a single row of standard plastic hanging bins - See chart below for number of bins allowable per rail.

- Holds 4" and 6" Bins
- Fits 60" and 72" Frames
- One Rail Per Row on Bins
- Bins Sold Separately

Part #	Fits Upright Frame	4" w Bins	6" w Bins	Description
DFXR-105-60	60" Frame	6	4	Bin Rail for Dura-Flex
DFXR-105-72	72" Frame	7	5	Bin Rail for Dura-Flex

Plastic Bins

Part #	Size	Description
DFXB-442	4.125" w x 7.375" d x 3" h	Plastic Bin
DFXB-695	5.50" w x 10.875" d x 5" h	Plastic Bin

Additional bin sizes available. Contact GMI for details.



Tool Trolley Rail

Tool rail provides a trolley to suspend tools above the work surface and allow lateral movement the length of the station - Mount assembly attaches to upper back support.

- 45 lb Weight Capacity
- Roller Bearing Glides
- Support Mounts Sold Separately
- Works with Light Bar Option

Part #	Fits Frame	Description
DFXTR-60	60" Wide	Tool Rail with Trolley
DFXTR-72	72" Wide	Tool Rail with Trolley
DFXTR-MNT	All	Tool Rail Mounting Supports - Not Required With Task Light



Tool Tray

Use for holding tools at the ready - Tray measures 14" d x 14" w - Can be mounted at variable heights to the Dura-Flex upright - Universal left or right hand mount - Arm swings 180 degrees.

- 30 lb Weight Capacity
- Universal Mount
- Swings 180 Degrees
- Rubber Mat Included

Part #	Fits Frame	Description
DFXTT-30	All	Universal Tool Tray with Rubber Pad

