

Extreme Duty Cabinets



Extreme duty storage cabinets are manufactured to meet the demanding requirements of heavy use in tough environments. Constructed of 12 gauge steel exterior components featuring all welded construction. Doors are mounted on 3/8" steel pins with brass bushings, welded hinges, and allow 140 degrees of door swing. Solid steel handle accepts heavy padlock (not included). Three point latching system has a top and bottom 3/8" bar lock mechanism with a 3/16" steel plate center latch. Shelves are 14 gauge steel with formed edges. Shelves bolt into vertical supports on 1" centers. Cabinet bottom is flush with opening. Bottom leg supports are 6" high and have floor anchor plates.

Heavy Duty**1500 lb. Shelf Capacity****Solid Steel Handle with Padlock Hasp****All Welded Steel Hinge**

Extreme Duty Cabinets



General Storage

All welded 12 gauge steel construction - (4) 14 gauge steel adjustable shelves - Shelves bolt into supports - Flush bottom pan - All welded door hinges - 3 point door lock with heavy duty steel padlocking handle - 6" high legs with floor tabs.

	O.A.H	Cab Ht.	36"w	48"w	60"w	72"w	Shelves
24" Deep	54"	48"	EX-483-1	EX-484-1	EX-485-1	EX-486-1	3
	66"	60"	EX-603-1	EX-604-1	EX-605-1	EX-606-1	4
	84"	78"	EX-783-1	EX-784-1	EX-785-1	EX-786-1	4
	90"	84"	EX-843-1	EX-844-1	EX-845-1	EX-846-1	5
	Extra Shelf		E-SH243	E-SH244	E-SH245	E-SH246	



Bin/ Shelf Storage

All welded 12 gauge steel construction - Door mounted small plastic bins measure 4.125"h x 7.375"d x 3"h - (4) 14 gauge steel adjustable shelves - Shelves bolt into supports - Three point door lock with heavy duty steel padlocking handle - 6" high legs with floor tabs.

Size	Model Number	Small Bins	Large Bins
36"w x 24"d x 84"h	EX-723-1BS3	94	0
48"w x 24"d x 84"h	EX-724-1BS3	142	0



General Storage w/Clear View Door

General storage cabinet with 1/4" polycarbonate panels in front doors - (4) 14 gauge adjustable shelves - All welded door hinges - 3 point door lock with heavy duty steel padlocking handle - 6" high legs with floor tabs.

	O.A.H	Cab Ht.	36"w	48"w	60"w	72"w	Shelves
24" Deep	54"	48"	EX-483-1C	EX-484-1C	EX-485-1C	EX-486-1C	3
	66"	60"	EX-603-1C	EX-604-1C	EX-605-1C	EX-606-1C	4
	84"	78"	EX-783-1C	EX-784-1C	EX-785-1C	EX-786-1C	4
	90"	84"	EX-843-1C	EX-844-1C	EX-845-1C	EX-846-1C	5
	Extra Shelf		E-SH243	E-SH244	E-SH245	E-SH246	



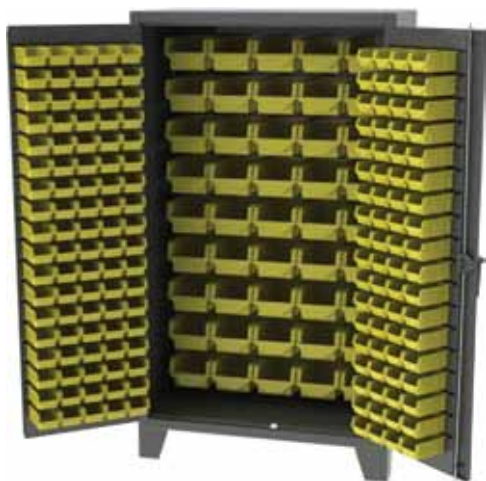
Divided Wardrobe/Storage

Cabinet features divided interior with 1/2 width hanger rod for garments on one side and (4) 1/2 width adjustable shelves on the other - 3 point door lock with heavy duty steel padlocking handle - 6" high legs with floor tabs.

	O.A.H	Cab Ht.	36"w	48"w	60"w	72"w	Shelves
24" Deep	54"	48"	EX-483-2	EX-484-2	EX-485-2	EX-486-2	3
	66"	60"	EX-603-2	EX-604-2	EX-605-2	EX-606-2	4
	84"	78"	EX-783-2	EX-784-2	EX-785-2	EX-786-2	4
	90"	84"	EX-843-2	EX-844-2	EX-845-2	EX-846-2	5
	Extra Shelf		SH243	SH244	SH245	SH246	



Extreme Duty Cabinets



Bin Storage

All welded 12 gauge steel construction - Large plastic bins measure 8.25" w x 14.75" d x 7" h - Small plastic bins measure 4.125" w x 7.375" d x 3" h - Bins securely attach to mounting rail - Bins are easily removable - All welded door hinges - 3 point door lock with heavy duty steel padlocking handle - 6" high legs with floor tabs..

Size	Model Number	Small Bins	Large Bins
36" w x 24" d x 84" h	EX-723-1B	94	32
48" w x 24" d x 84" h	EX-724-1B	142	40



Bin/Shelf Storage

All welded 12 gauge steel construction - (3) adjustable shelves - Large plastic bins measure 8.25" w x 14.75" d x 7" h - Small plastic bins measure 4.125" w x 7.375" d x 3" h - Bins securely attach to mounting rail - Bins are easily removable - All welded door hinges - 3 point door lock with heavy duty steel padlocking handle - 6" high legs with floor tabs..

Size	Model Number	Small Bins	Large Bins
36" w x 24" d x 84" h	EX-723-1BS5	94	16
48" w x 24" d x 84" h	EX-724-1BS5	144	20



14 Drawer Storage

All welded 12 gauge steel construction - Cabinet features (14) lower drawers measuring 25.70" x 20.125" d x 4" h - Drawers mounted on full extension glides with a 250 lb capacity - Divided cabinet has two (3) point door locks with heavy duty steel handles - All welded door hinges - (4) 14 gauge steel shelves (2 adjustable) with a weight capacity of 1850 lbs per shelf.

Size	Model Number	Drawers	Shelves
60" w x 24" d x 84" h	EX-4200-60	14	4
72" w x 24" d x 84" h	EX-4200-72	14	4



6 Drawer Storage

All welded 12 gauge steel construction - Cabinet features (6) mid mount drawers measuring 25.70" w x 20.125" d x 4" h - Drawers mounted on full extension glides with a 250 lb capacity - Divided cabinet has two (3) point door locks with heavy duty steel handles - All welded door hinges - (6) 14 gauge steel shelves (4 adjustable) with a weight capacity of 1850 lbs per shelf.

Size	Model Number	Drawers	Shelves
60" w x 24" d x 84" h	EX-4300-60	6	6
72" w x 24" d x 84" h	EX-4300-72	6	6



Extreme Duty Cabinets



Bin Storage/Tool Panel

All welded 12 gauge steel construction - Door mounted small plastic bins measure 4.125" h x 7.375" d x 3" h - Bins securely attach to mounting rail - Bins are easily removable - All welded door hinges - Steel tool panel with .375" square holes on 1.5" centers mounted to back - Three point door lock with heavy duty steel padlocking handle - 6" high legs with floor tabs.

Size	Model Number	Small Bins	Large Bins
36" w x 24" d x 84" h	EX-723-1BTP	94	0
48" w x 24" d x 84" h	EX-724-1BTP	142	0



Bin Storage/Tool Panel

All welded 12 gauge steel construction - Large plastic bins measure 8.25" w x 14.75" d x 7" h - Small plastic bins measure 4.125" h x 7.375" d x 3" h - Bins securely attach to mounting rail - Bins are easily removable - All welded door hinges - Steel tool panel with .375" square holes on 1.5" centers mounted to upper back - Three point door lock with heavy duty steel padlocking handle - 6" high legs with floor tabs.

Size	Model Number	Small Bins	Large Bins
36" w x 24" d x 84" h	EX-723-1BS3TP	94	16
48" w x 24" d x 84" h	EX-724-1BS3TP	142	20



Divider Storage With Back Tool Panel

All welded 12 gauge steel construction - Cabinet features divided interior with (4) 1/2 width adjustable shelves on the left side - Steel tool panel with .375" square holes on 1.5" centers mounted to back on right hand side - All welded door hinges - 3 point door lock with heavy duty steel padlocking handle - 6" high legs with floor tabs.

Size	Model Number	Drawers	Shelves
60" w x 24" d x 84" h	EX-845-2TP	0	4
72" w x 24" d x 84" h	EX-846-2TP	0	4



Divided Open Tool Panel Backs

All welded 12 gauge steel construction - All welded door hinges - Cabinet features interior full height steel tool panels on both doors and back - Panels have .375" square holes on 1.5" centers mounted to back - 3 point door lock with heavy duty steel padlocking handle - 6" high legs with floor tabs.

Size	Model Number	Drawers	Shelves
60" w x 24" d x 84" h	EX-845-3TP	0	0
72" w x 24" d x 84" h	EX-846-3TP	0	0



Tool Cabinet Accessories



Plastic Tote Tray

Tote measures 13.75" w x 19" d x 4.375" h - Heavy gauge polyethylene material - Available in tan only.

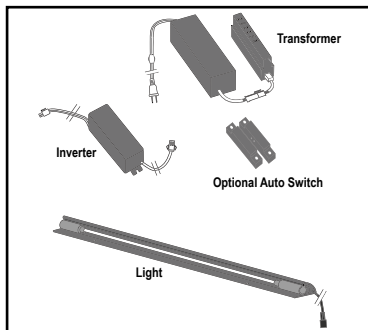
Part #	Description
TOTE-1319	Single Tote Tray



Power Aprons

Universal power aprons measure 4" h - Aprons can be used with Dura-Flex or mount directly to work surface - Provides (5) 120V-15 amp outlets with a lighted on/off switch - Provided with a 6' cord & plug.

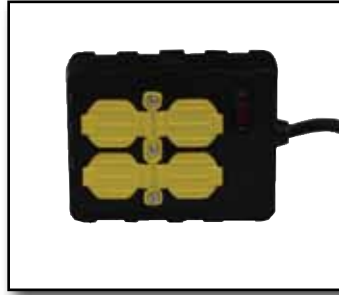
Part #	Description
DTPA-30	30" Power Apron
DTPA-36	36" Power Apron
DTPA-48	48" Power Apron
DTPA-60	60" Power Apron
DTPA-72	72" Power Apron
DTPA-84	84" Power Apron



Interior Cabinet Light

Adds interior light to tool cabinets - 120v x 15 amp circuit required - Optional on/off switch or automatic magnetic switch.

Part #	Description
ICL-M	Interior Light Kit - Manual Switch
ICL-A	Interior Light Kit - Auto Switch



Power Outlet Box

Box has a lighted circuit breaker switch that indicates power is on - (4) 120V x 15 amp outlets with covers - Constructed of sturdy plastic - 6' heavy-duty 12 gauge power cord.

Part #	Description
DTPWR-4	Four Outlet Box with Cord



Drawer Divider Kits

Drawer divider kits will assist in keeping your small parts organized and readily available. Kits are offered in a variety of styles and configurations. Please refer to page 67 for more details on divider kits.

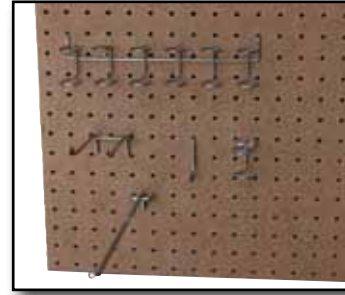
Part #	Description
Divider Kits	See Page 67 for Details



Polyethylene Plastic Bins

Two standard sizes - Small bins measure 4.125" h x 7.375" d x 3" h - Large bins measure 8.25" w x 14.75" d x 7" h - Available in yellow only - Special sizes available upon request.

Part #	Description
GBN-4-Y	4.125" h x 7.375" d x 3" h - Small Bin
GBN-8-Y	8.25" h x 14.75" d x 7" h - Large Bin



Standard Peg Board Tool Hook Kit

200 piece assorted tool hook kit that includes:

- 50 - small "J" hooks
- 50 - medium "J" hooks
- 25 - 4" straight hooks
- 25 - 2" straight hooks
- 20 - single loop hooks
- 20 - angled hooks
- 05 - loop racks
- 05 - hook racks

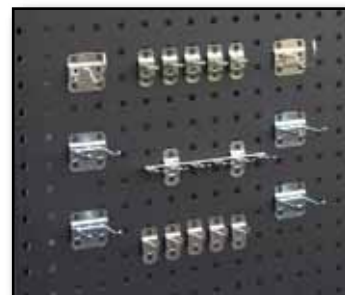
Part #	Description
PEG-200	200 Piece Hook Kit



Castors

Convert your GTV 5000/5500 to a mobile unit with optional caster kits - (2) swivel with brake and (2) rigid casters per kit - Available in standard 4" casters - Contact factory for details as some restrictions apply.

Part #	Description
GTVCTR - 4	4" Caster Kit



Square Hole Panel Tool Hooks

63 piece assorted tool hook kit that includes:

- 05 - 1" rod hook
- 05 - 3" rod hook
- 05 - 6" rod hook
- 05 - 1-1/4" circle
- 05 - 3" double hook (30°)
- 05 - 3" double hook (90°)
- 05 - 3" double hook (80°)
- 05 - medium spring clip
- 05 - spring clip/can
- 05 - small spring clip
- 05 - 2" curved hook
- 05 - hammer/plier holder
- 03 - multi prong toll holder

Part #	Description
SQPEG-400	63 Piece Square Hook Kit



Flammable/Chemical Storage Cabinets

Store your flammable liquids safely. These flammable safety cabinets comply with the National Fire Protection Association Flammable Combustible Liquid Code #30 and OSHA standard 1910.106 for flammable storage of 1, 2 and 3 liquids. FM approved. Double walled 18-gauge all-welded steel with 1-1/2" insulating air space. Safety storage cabinet includes a built in grounding connector, dual 2" vents, and has a 2"d leak proof doorsill. The 350 lb capacity galvanized steel shelves adjust on 3" centers. Doors have full length piano hinges. Cabinet features a recessed paddle handle with cylinder lock and padlocking latch for security. Stainless steel 3-point self-latching system provides positive door locking. Adjustable leveling feet for uneven floors. Durable powder coat finish with warning labels.



Flammable Cabinet

Part #	Description
WCF-3672FL-M	(45 Gallon) 18"d x 43"w x 65"h Cabinet with Manual Doors
WCF-3672FL-S	(45 Gallon) 18"d x 43"w x 65"h Cabinet with Self Closing Doors



Pesticide Storage cabinet safely stores insecticides, herbicides, and other turf chemicals. Pesticide Safety cabinet complies with National Fire Protection Association specifications, OSHA regulations, and is approved by the Factory Mutual System. Double walled 18-gauge all-welded steel with 1-1/2" insulating air space. Storage cabinet includes a built in grounding connector, dual 2" vents, and has a 2"d leak proof doorsill. The 350 lb capacity galvanized steel shelves adjust on 3" centers. Doors have full length piano hinges. Cabinet features a recessed paddle handle with cylinder lock and padlocking latch for security. Stainless steel 3-point self-latching system provides positive door locking. Adjustable leveling feet for uneven floors. Durable powder coat finish with warning labels.

Pesticide Cabinet

Part #	Description
WCP-3672P30-M	(30 Gallon) 18"d x 43"w x 44"h Cabinet with Manual Doors
WCP-3672P45-M	(45 Gallon) 18"d x 43"w x 65"h Cabinet with Manual Doors
WCP-3672P60-M	(60 Gallon) 31.25"d x 31.25"w x 65"h Cabinet with Manual Doors

