

Dura-Flex Upper & Accessories

TOOLS REQUIRED FOR ASSEMBLY

Electric Hand Drill, Phillips Head Bit, 3/8" Magnetic Hex Driver Bit, 1/8" Drill Bit, Socket Set and Ratchet, Allen Wrench Set.

BEFORE ASSEMBLING THE WORKBENCH

Read through the assembly instructions to familiarize yourself with the order in which the parts are assembled.

We suggest that you clear & vacuum the area where the bench is to be assembled.

It is important that the bench is assembled in the same sequence as instructed.

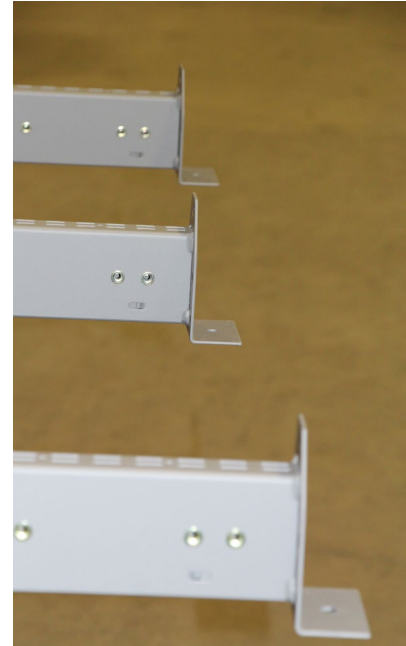
HARDWARE

All assembly hardware is provided.



STEP 1

Lay upright supports out on a table or the floor. Orient all the supports so the "L" shaped table top mounting brackets are facing the same direction as shown. Number of supports will vary depending on bench width.

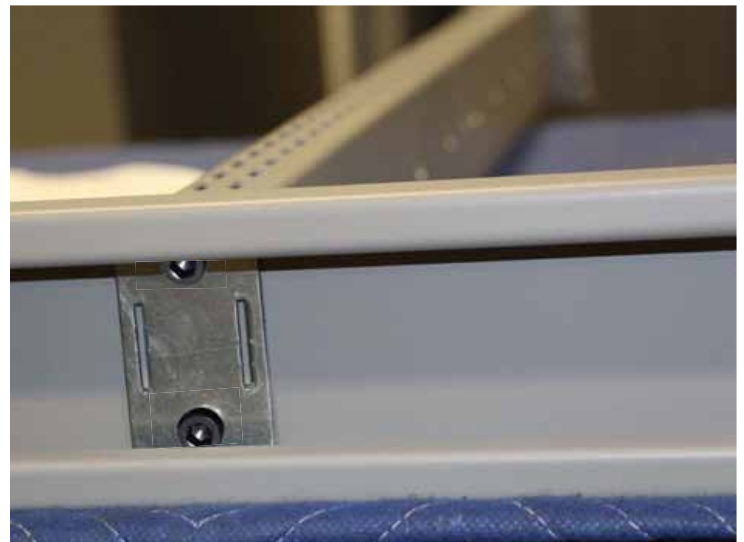


STEP 2

Insert the center vertical support into the center slots of the top support bar. Set backer plate inside top channel of the top bar and position the slots over the two tabs protruding into the channel. Secure using two socket head cap allen head screws.



1/4-20 x 3/4"
Socket head
cap screw



STEP 3

Insert the end vertical support into the end slot of the top support bar. Position end cap over the other tab as shown in center image below. Set backer plate inside top channel of the top bar and position the slots over the two tabs protruding into the channel. Secure using two socket head cap allen head screws. Repeat for opposite end support.



1/4-20 x 3/4"
Socket head
cap screw



STEP 4

This step will require assistance: Raise the assembled supports into their upright position and place on top of desired mounting surface. Before mounting ensure the supports are square and spacing between vertical supports is equal from top to bottom. Predrill each hole using an 1/8" drill bit. Secure vertical supports to mounting surface with provided 1" lag bolts in each hole of the "L" brackets.



#14 x 1"
Lag Bolt

Note: Steel Tops

Secure vertical supports to mounting surface with provided 1/4-10 x 1/2" flange head bolts in each hole of the "L" brackets. Pre-installed nuts will be in the steel top.

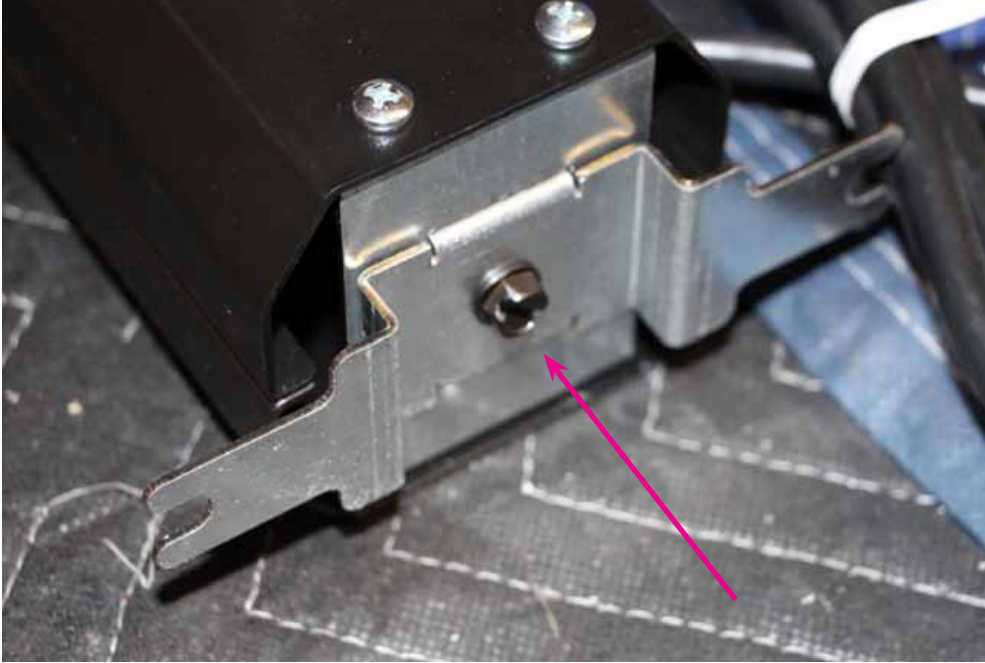


1/4-20 x 1/2"
Flange Head Bolt



STEP 5 Installation of Optional Power Apron.

Insert mounting bracket on each side of the power apron by lining up the tabs on the bracket with the slots on the end of the power apron. Use (1) 1/4-20 x 1/2" flange head bolt to secure the bracket.



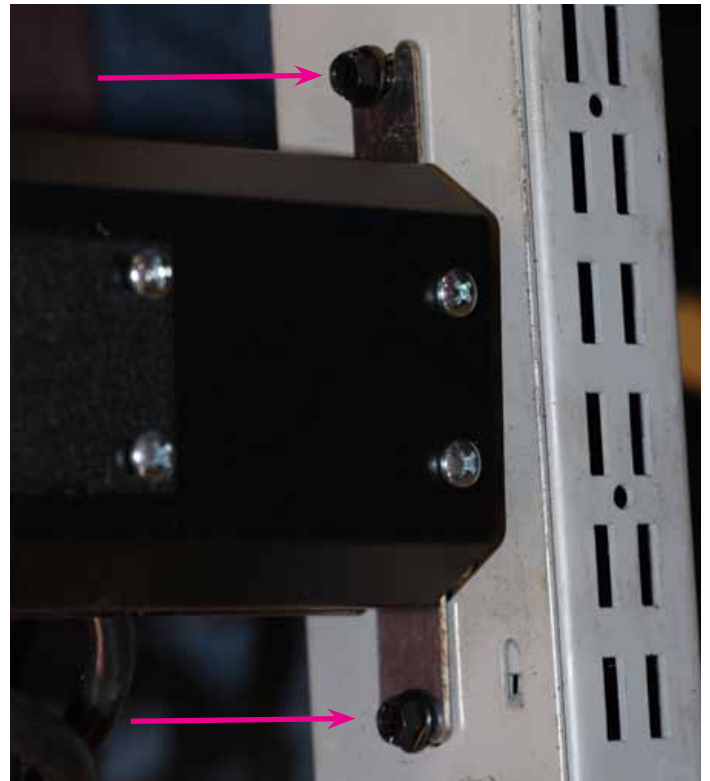
1/4-20 x 1/2"
Flange Head Bolt

STEP 6

Once mounting brackets are installed position the power apron between the uprights. Line up the mounting bracket with the pre-installed nuts on the sides of the uprights. Attach apron to the upright using 1/4-20 x 1/2" flange head bolts



1/4-20 x 1/2"
Flange Head Bolt



STEP 7

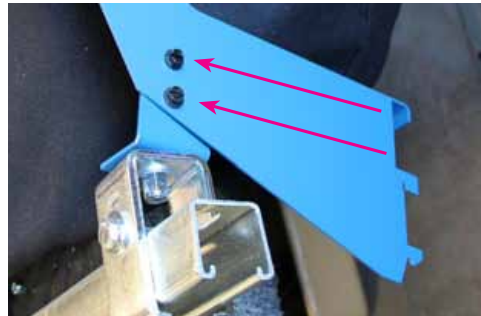
Installation of Shelves and Task Lighting Option

Attach hanger brackets on sides of shelf or lighting assembly using provided flange head bolts.

For tool trolleys mount the channel to the bracket as shown by the red arrow. These will use the (4) flange head bolts and nylock nuts to mount to the bracket.



1/4-20 x 1/2"
Flange Head Bolt



STEP 8

Insert tabs of hanger brackets into vertical supports at desired height.



Note: Photos shown are for basic assembly, pictured items may vary from ordered products.

STEP 9

Installation of Peg Board Panel Option

Attach the peg board brackets on the sides of the uprights, position as shown in pictures. Attach using 1/4-20 x 1/2" flange head bolts bolted into the pre-installed nuts in the upright.

Position the peg board panel so it is Attach the peg board panel to the brackets using #8-32 x 1/2" Pan head screws and nylock nuts.



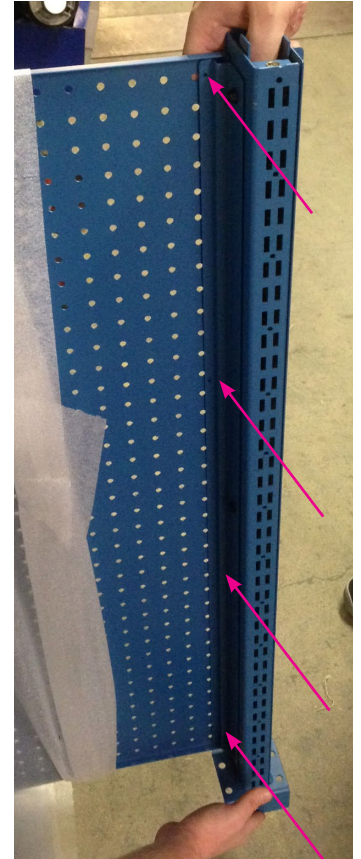
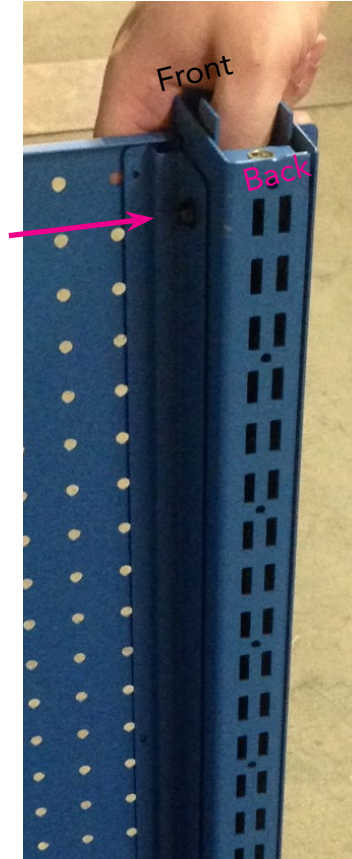
1/4-20 x 1/2"
Flange Head Bolt



#8-32x1/2
PAN HEAD SCREW



Nylock Nut



Bin Panel

Installation of Bin Panel Slat wall

Attach the slat wall to the sides of the uprights, position as shown in pictures. Attach using 1/4-20 x 1/2" flange head bolts bolted into the pre-installed nuts in the upright. Each panel should require 6 bolts, 3 on each side.



1/4-20 x 1/2
Flange Head Bol



Note: Photos shown are for basic assembly, pictured items may vary from ordered products.