

MG - Casters

TOOLS REQUIRED FOR ASSEMBLY

1/2" Wrench and 1/2" Socket

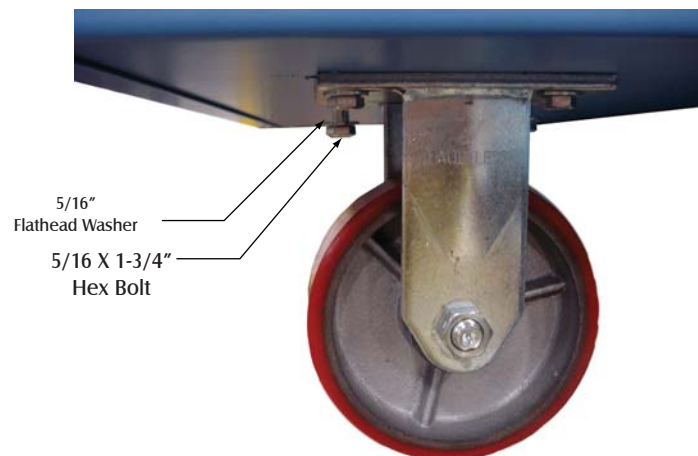
BEFORE ASSEMBLING THE WORKBENCH

Read through the assembly instructions to familiarize yourself with the order in which the parts are assembled.

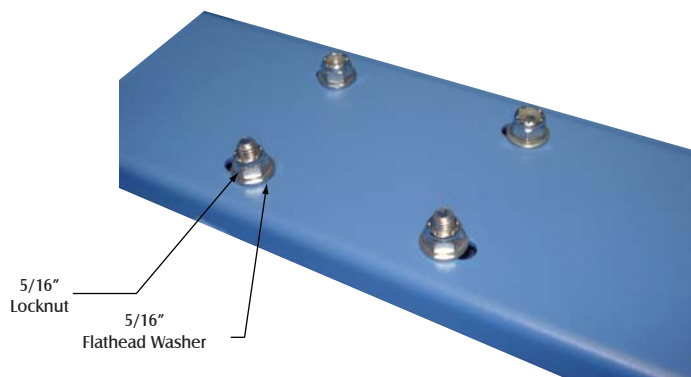
HARDWARE

All assembly hardware is provided.

Bottom

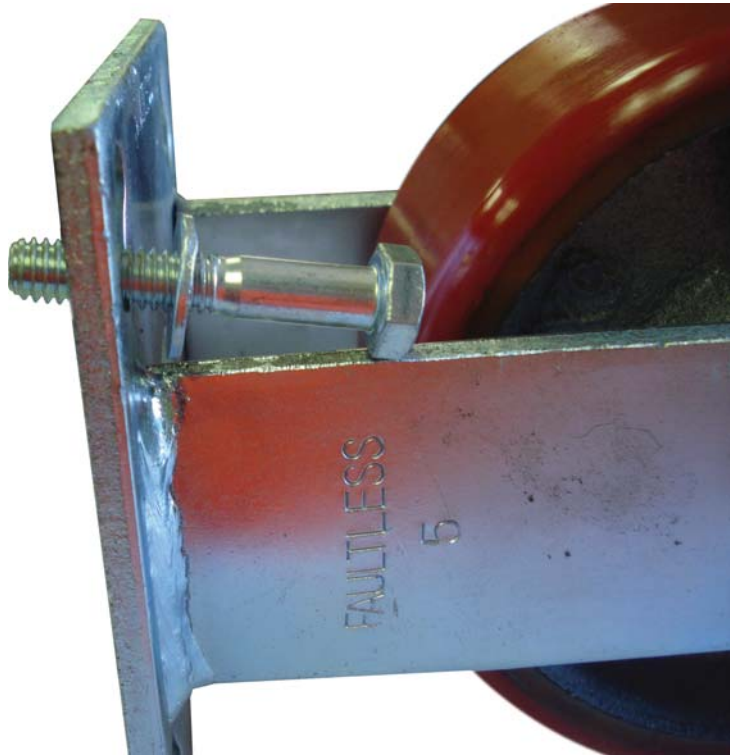


Top



STEP 1

Place (1) 5/16 X 1-3/4" Hex Bolt through (1) 5/16" Flatwasher and stick them through one of the holes in the caster.



STEP 2

Stick the bolt and washer through one of the holes through the bottom of the cabinet. On the other end place (1) 5/16" Flatwasher onto the Hex Bolt. Screw (1) 5/16" Locknut onto the Hex Bolt tightening the caster to the cabinet bottom.

Repeat steps 1-2 for all four holes on the caster and then repeat again for each caster that is to be connected to the cabinet.

