

B SERIES POTTING BENCH

TOOLS REQUIRED FOR ASSEMBLY

Socket set, Open end wrench set, Cordless drill with 3/8" socket bit (Magnetic recommended).

BEFORE ASSEMBLY

Read through the assembly instructions to familiarize yourself with the order in which the parts are assembled. We suggest that you clear & vacuum the area where the bench is to be assembled. It is important that the bench is assembled in the same sequence as instructed.

HARDWARE

All assembly hardware is provided.



STEP 1

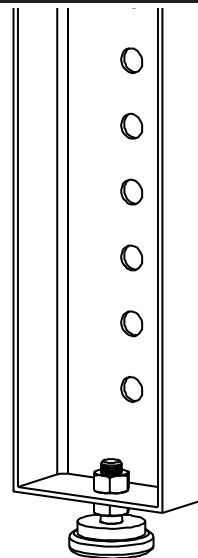
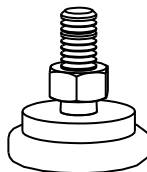
LEVELER KIT OPTION

****SKIP THIS STEP IF YOU HAVE NOT PURCHASED THE LEVELER OPTION****

Thread 1 thin nut onto the leveler.

Place leveler into floor-mount hole at the base of the leg. Thread a second thin nut onto the leveler.

Loosen & tighten nuts to adjust the height of your work bench.



STEP 2

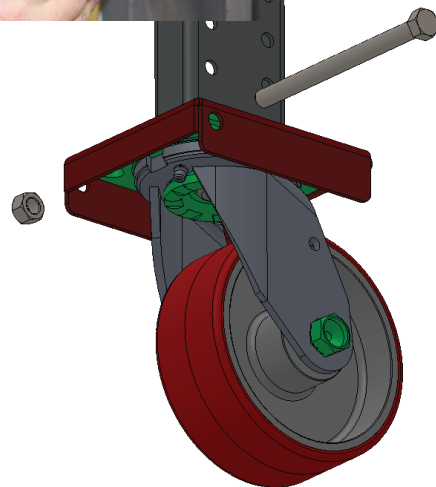
MOBILE CASTER KIT OPTION

****SKIP THIS STEP IF YOU HAVE NOT PURCHASED THE CASTER OPTION****

Attach the single bolt casters to the bottom of the legs or the base of the insert if its an adjustable height bench..

NOTE: TWO TYPES OF CASTERS ARE PROVIDED (SWIVEL AND FIXED) BE SURE TO USE TWO OF THE SAME TYPE AT EACH END OF THE BENCH (TWO SWIVEL CASTERS ON THE RIGHT AND TWO FIXED ON THE LEFT). ALSO BE SURE THE FIXED CASTERS ARE POSITIONED SO THE GREASE ZERK IS ACCESSIBLE FROM THE OUTSIDE OF THE BENCH (SEE FIG. 2). IF ALL SWIVEL CASTERS ARE ORDERED, PLACEMENT WILL NOT BE IMPORTANT.

Insert the top of the caster into the angled lip pocket (this will be the side opposite of the bolt holes), tilt the caster flat against the mounting plate until the bolt is able to be slid behind the caster, locking it in place. Bolt in place using (1) 3/8" x 4-3/4" long hex head bolt and 3/8" nylock nut. Repeat steps for the other caster locations.



Nylock Nut



3/8" x 4-3/4"
Flange Head Bolt

STEP 3

ADJUSTABLE HEIGHT

****SKIP THIS STEP IF YOU HAVE NOT PURCHASED THE ADJUSTABLE HEIGHT OPTION****

Attach the galvanized adjustable upright inserts to the leg at desired height.

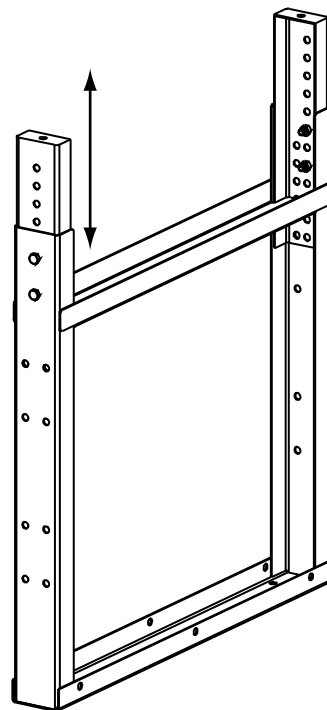
Use (2) 5/16 x 3/4" Bolts with Lock Nuts per insert.



5/16-18 x 3/4"
Hex Head Bolt



Nylock Nut



STEP 4

Attach the rear brace to the leg assemblies.

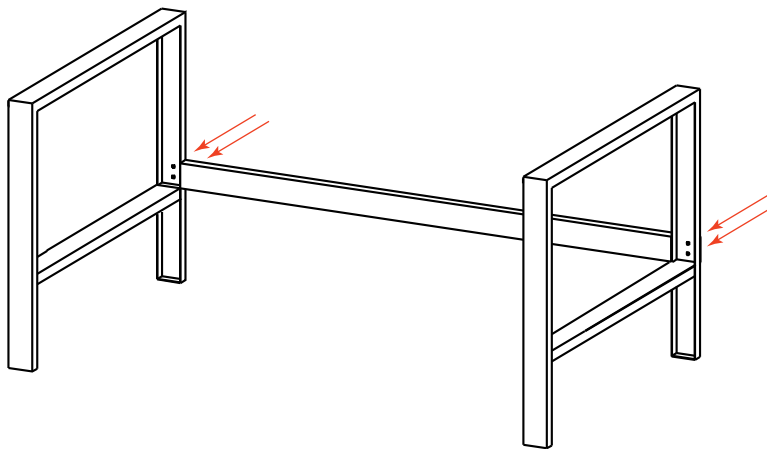
Use (8) 5/16 x 3/4" hex head bolts with nylock nuts.



5/16-18 x 3/4"
Hex Head Bolt



Nylock Nut



STEP 5

Attach the lower shelf to the leg assemblies.

Use (4) 5/16 x 3/4" hex head bolts with nylock nuts. Attach the back of the shelf to the back brace using (3) #8 x 5/8" sheet metal screws.



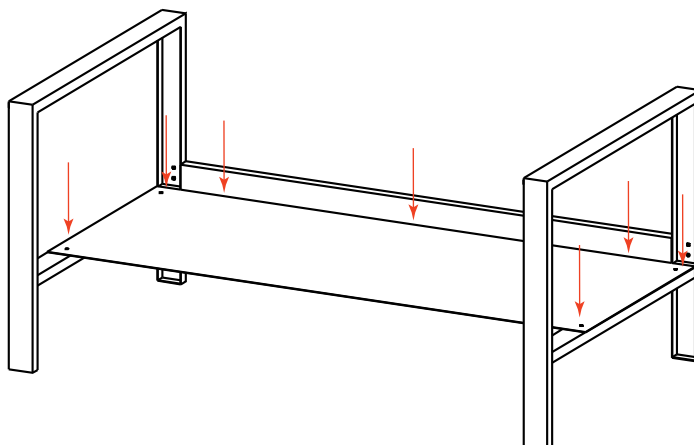
5/16-18 x 3/4"
Hex Head Bolt



Nylock Nut



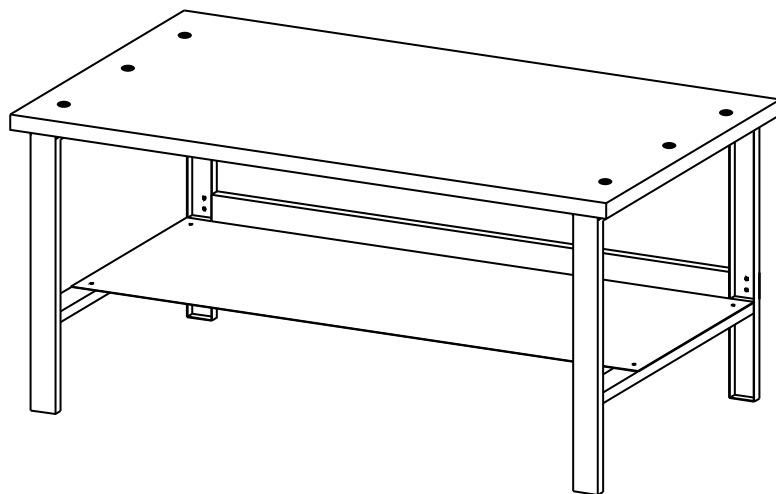
Shelf to
Back Brace



STEP 6

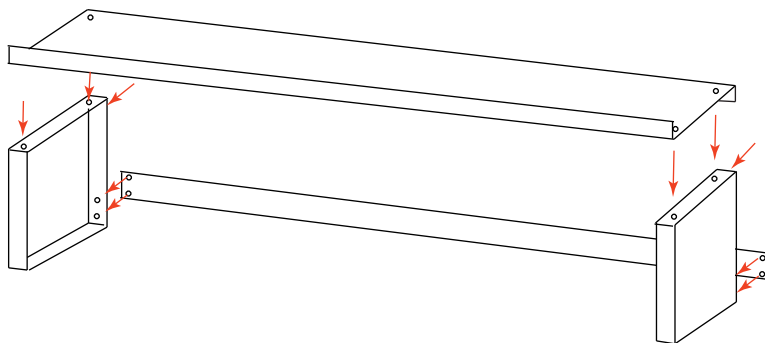
Center worksurface on the assembled base.

Fasten it to the top of the leg assemblies using (6) 5/16 X 3/4" Truss Head Bolts w/ nylock nuts.



STEP 7

Bolt together upper riser using (10) 1/4-20 x 1/2" flange head bolts and nylock nuts.



STEP 8

Mount the riser to the top worksurface using (4) 1/4-20 x 1/2" Flange head bolts and nylock nuts.

