

Greenhouse Growing Table

TOOLS REQUIRED FOR ASSEMBLY

Socket set, Open end wrench set, Cordless drill with 3/8" socket bit (Magnetic recommended).

BEFORE ASSEMBLY

Read through the assembly instructions to familiarize yourself with the order in which the parts are assembled. We suggest that you clear & vacuum the area where the bench is to be assembled. It is important that the bench is assembled in the same sequence as instructed.

HARDWARE

All assembly hardware is provided.



STEP 1

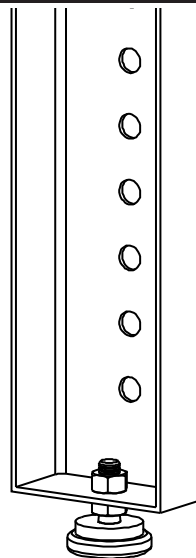
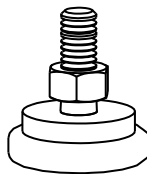
LEVELER KIT OPTION

****SKIP THIS STEP IF YOU HAVE NOT PURCHASED THE LEVELER OPTION****

Thread 1 thin nut onto the leveler.

Place leveler into floor-mount hole at the base of the leg. Thread a second thin nut onto the leveler.

Loosen & tighten nuts to adjust the height of your work bench.



STEP 2

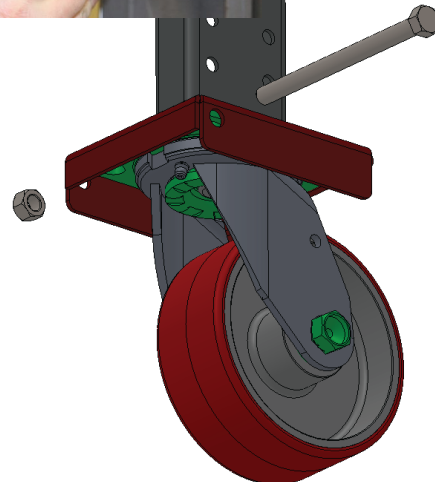
MOBILE CASTER KIT OPTION

****SKIP THIS STEP IF YOU HAVE NOT PURCHASED THE CASTER OPTION****

Attach the single bolt casters to the bottom of the legs or the base of the insert if its an adjustable height bench..

NOTE: TWO TYPES OF CASTERS ARE PROVIDED (SWIVEL AND FIXED) BE SURE TO USE TWO OF THE SAME TYPE AT EACH END OF THE BENCH (TWO SWIVEL CASTERS ON THE RIGHT AND TWO FIXED ON THE LEFT). ALSO BE SURE THE FIXED CASTERS ARE POSITIONED SO THE GREASE ZERK IS ACCESSIBLE FROM THE OUTSIDE OF THE BENCH (SEE FIG. 2). IF ALL SWIVEL CASTERS ARE ORDERED, PLACEMENT WILL NOT BE IMPORTANT.

Insert the top of the caster into the angled lip pocket (this will be the side opposite of the bolt holes), tilt the caster flat against the mounting plate until the bolt is able to be slid behind the caster, locking it in place. Bolt in place using (1) 3/8" x 4-3/4" long hex head bolt and 3/8" nylock nut. Repeat steps for the other caster locations.



Nylock Nut



3/8" x 4-3/4"
Flange Head Bolt

STEP 3 ADJUSTABLE HEIGHT

Attach the galvanized adjustable upright inserts to the legs at desired height.

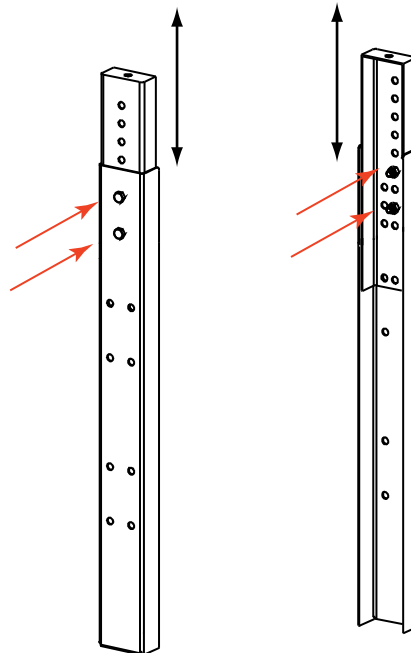
Use (2) 5/16 x 3/4" Bolts with Lock Nuts per insert.



5/16-18 x 3/4"
Hex Head Bolt



Nylock Nut



STEP 4

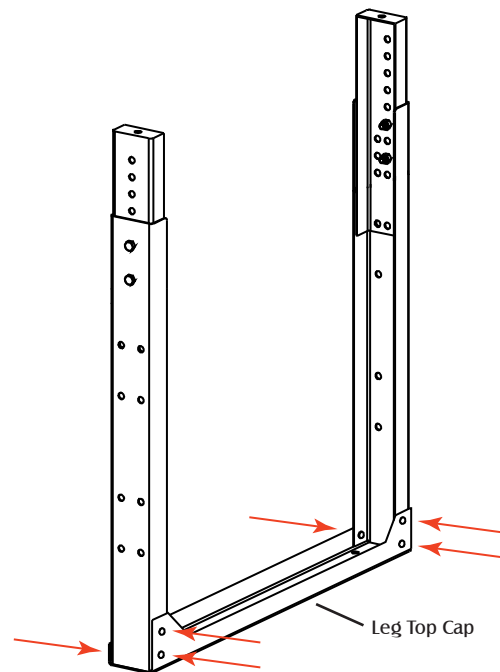
Using (6) 5/16" x 3/4" Bolts & Lock Nuts, attach the leg top cap to the legs. Bolts should be inserted so the nut is on the inside of the leg channel.



5/16-18 x 3/4"
Hex Head Bolt



Nylock Nut



STEP 5

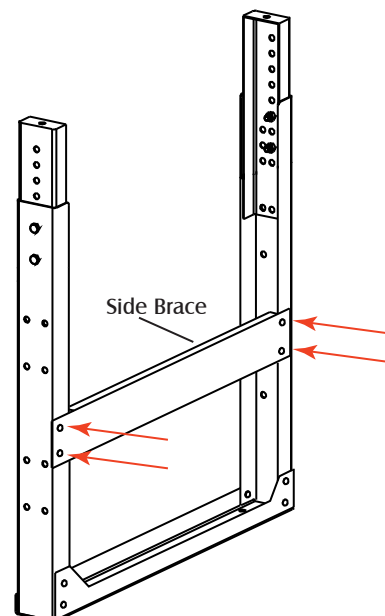
Using (4) 5/16" x 3/4" Bolts & Lock Nuts, attach the side brace to the legs. Bolts should be inserted so the nut is on the inside of the leg channel.



5/16-18 x 3/4"
Hex Head Bolt



Nylock Nut



STEP 6

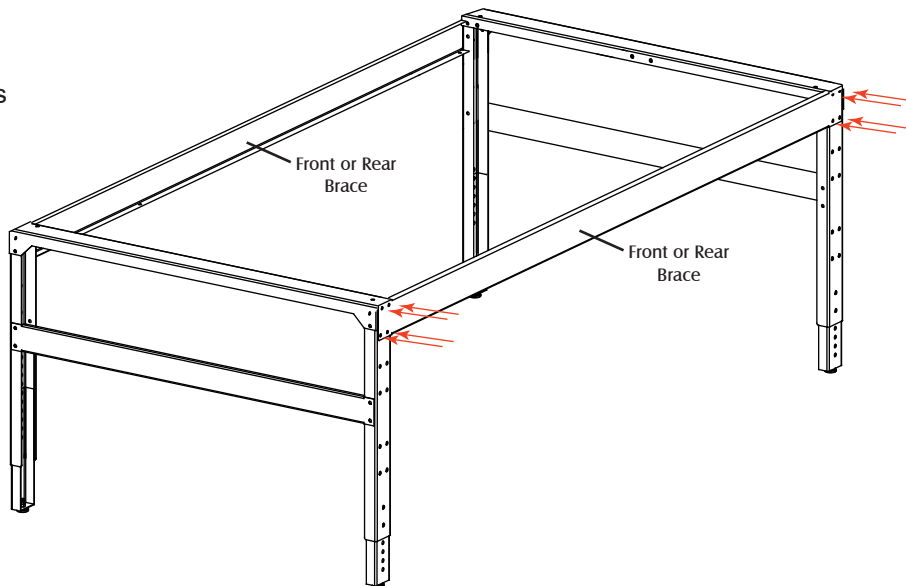
Attach the leg assemblies together with the front and rear braces. The braces will mount at the top of legs. Use (16) 5/16" x 3/4" bolts & lock nuts to attach the braces.



5/16-18 x 3/4"
Hex Head Bolt



Nylock Nut



STEP 7

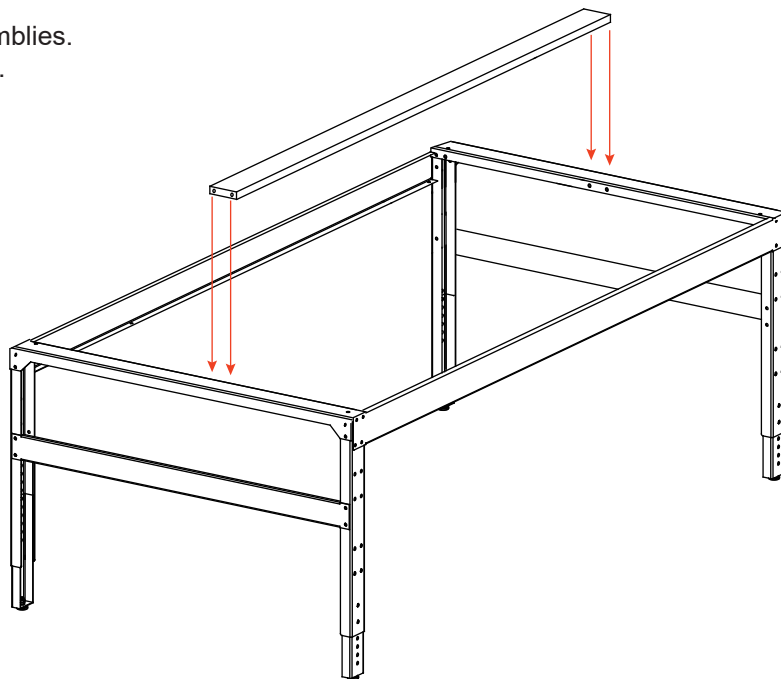
Attach the top center support between the two leg assemblies. Use (4) 5/16" x 3/4" bolts & lock nuts to attach the brace.



5/16-18 x 3/4"
Hex Head Bolt



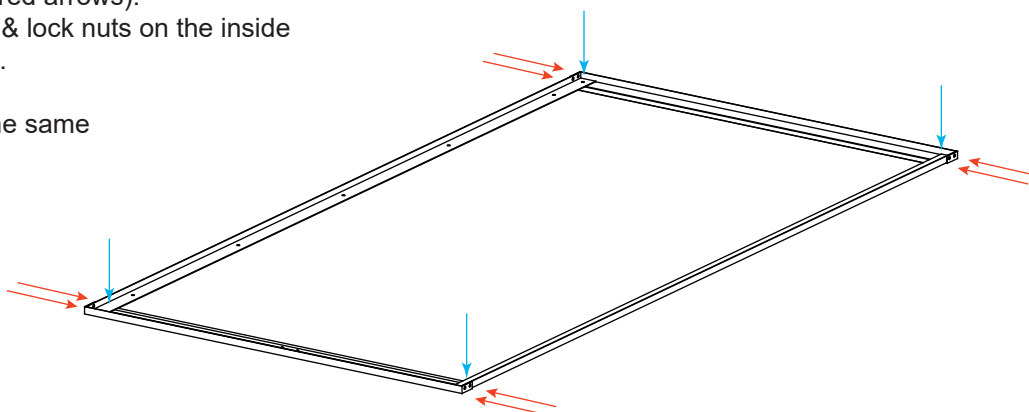
Nylock Nut



STEP 8

Next assemble the top worksurface frame. Use (8) 1/4"-20 x 1/2" bolts & lock nuts on the outside corners of frame (indicated by red arrows). Use (4) 1/4"-20 x 1/2" truss head bolts & lock nuts on the inside of the frame (indicated by blue arrows).

Note: Insert the heads of the bolts in the same direction of the arrows shown.



1/4-20 x 1/2"
Hex Head Bolt



Nylock Nut



1/4-20 X 1/2"
TRUSS HEAD BOLT



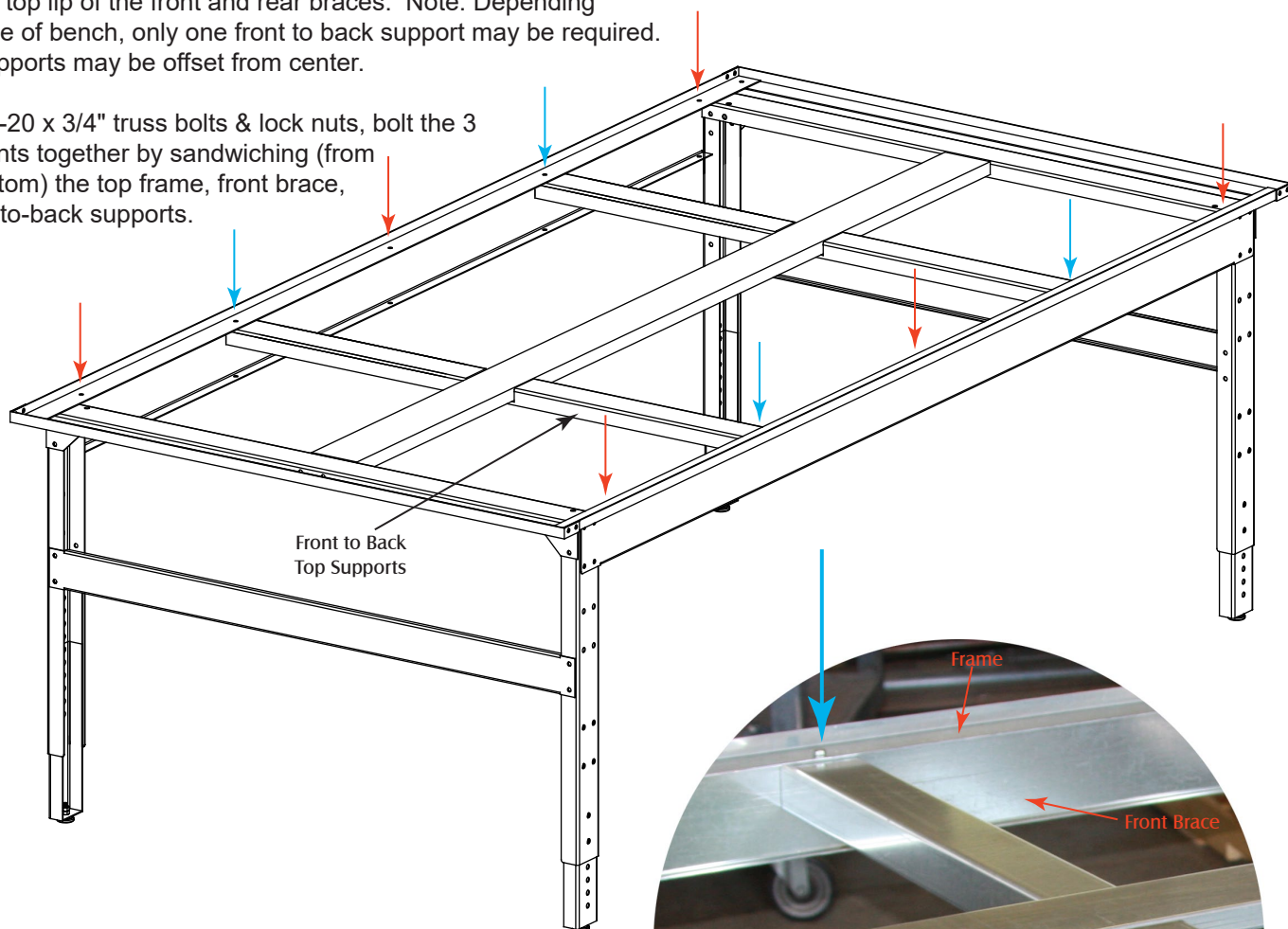
Nylock Nut

STEP 9

Lay the frame on the leg assembly. Holes in the front and rear frame assembly will line up with holes in the front and rear brace. Starting with the mounting locations indicated by red arrows, attach the frame using 1/4-20 x 3/4" truss head bolts & lock nuts.

For mounting locations in blue the front-to-back top supports must be inserted under the center support and positioned under the top lip of the front and rear braces. Note: Depending on the size of bench, only one front to back support may be required. Single supports may be offset from center.

Using 1/4-20 x 3/4" truss bolts & lock nuts, bolt the 3 components together by sandwiching (from top to bottom) the top frame, front brace, and front-to-back supports.



STEP 10

Insert the plastic grate worksurface into the frame. The sections of grate will interlock together, it is easier to join the pieces and one end of the bench and work your way down, like a zipper.

The bench is now assembled.

