

B SERIES INDUSTRIAL BENCHES

TOOLS REQUIRED FOR ASSEMBLY

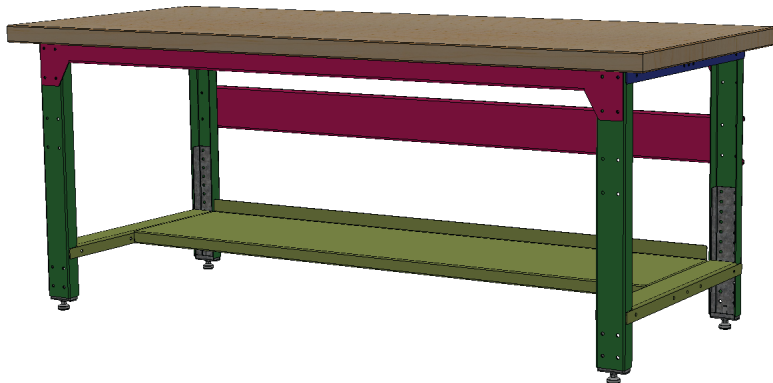
Socket set, Open end wrench set, Cordless drill with 3/8" socket bit (Magnetic recommended).

BEFORE ASSEMBLY

Read through the assembly instructions to familiarize yourself with the order in which the parts are assembled. We suggest that you clear & vacuum the area where the bench is to be assembled. It is important that the bench is assembled in the same sequence as instructed.

HARDWARE

All assembly hardware is provided.



STEP 1

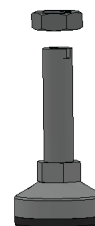
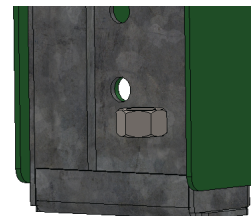
LEVELER KIT OPTION

****SKIP THIS STEP IF YOU HAVE NOT PURCHASED THE LEVELER OPTION****

Thread 1 thin nut onto the leveler.

Place leveler into floor-mount hole at the base of the leg or the base of the insert if its an adjustable height bench. Thread the top nut onto the leveler.

Loosen & tighten nuts to adjust the height of your work bench.



STEP 2

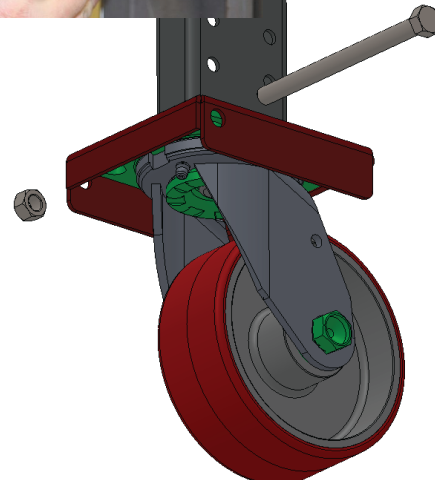
MOBILE CASTER KIT OPTION

****SKIP THIS STEP IF YOU HAVE NOT PURCHASED THE CASTER OPTION****

Attach the single bolt casters to the bottom of the legs or the base of the insert if its an adjustable height bench..

NOTE: TWO TYPES OF CASTERS ARE PROVIDED (SWIVEL AND FIXED) BE SURE TO USE TWO OF THE SAME TYPE AT EACH END OF THE BENCH (TWO SWIVEL CASTERS ON THE RIGHT AND TWO FIXED ON THE LEFT). ALSO BE SURE THE FIXED CASTERS ARE POSITIONED SO THE GREASE ZERK IS ACCESSIBLE FROM THE OUTSIDE OF THE BENCH (SEE FIG. 2). IF ALL SWIVEL CASTERS ARE ORDERED, PLACEMENT WILL NOT BE IMPORTANT.

Insert the top of the caster into the angled lip pocket (this will be the side opposite of the bolt holes), tilt the caster flat against the mounting plate until the bolt is able to be slid behind the caster, locking it in place. Bolt in place using (1) 3/8" x 4-3/4" long hex head bolt and 3/8" nylock nut. Repeat steps for the other caster locations.



Nylock Nut



3/8" x 4-3/4"
Flange Head Bolt

STEP 3

ADJUSTABLE HEIGHT

****SKIP THIS STEP IF YOU HAVE NOT PURCHASED THE ADJUSTABLE HEIGHT OPTION****

Attach the galvanized adjustable upright inserts to the leg at desired height.

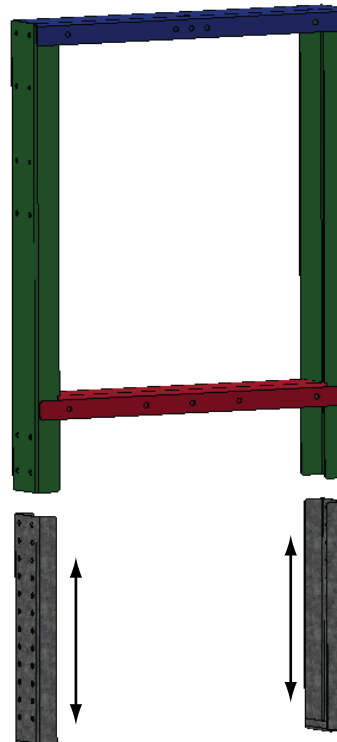
Use (4) 5/16 x 3/4" Bolts with Lock Nuts per insert.



5/16-18 x 3/4"
Hex Head Bolt



Nylock Nut



STEP 4

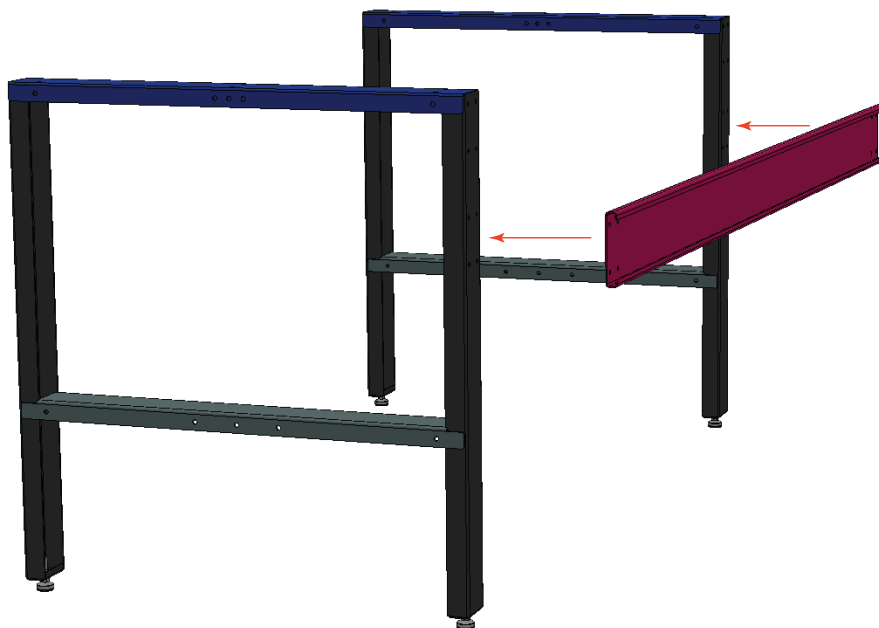
Using (8) 1/4-20 x 3/4" Bolts & Lock Nuts, attach the back brace to each leg assembly. NOTE: Mount the flat side of brace to back side of the legs. Do not fully tighten bolts.



1/4-20 x 3/4"
Hex Head Bolt



Nylock Nut



STEP 5

LOWER SHELF OPTION (continue if not purchased)

Slide shelf into place between the two leg assemblies. Two mounting holes on the ends of the shelf will line up with holes on the sides of each lower leg brace.

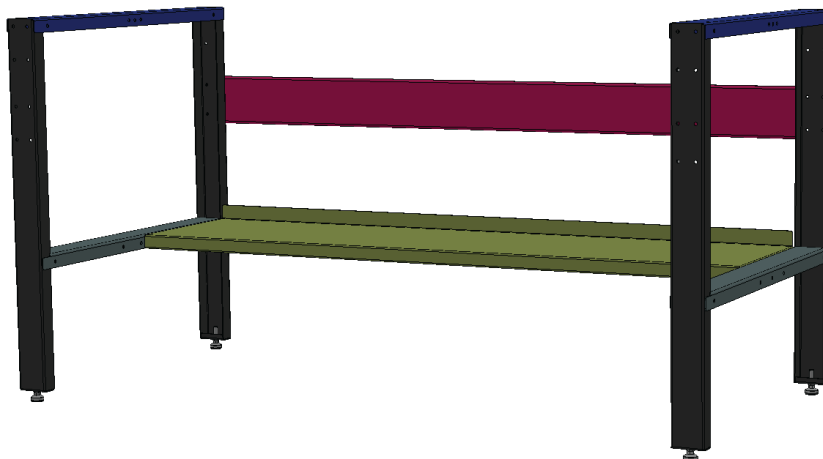
Use (4) 1/4-20 x 3/4" Bolts & Lock Nuts to attach the shelf to the legs.



1/4-20 x 3/4"
Hex Head Bolt



Nylock Nut



STEP 6

Mount the rear top support brace to the back side of the leg assemblies. Use (8) 1/4-20 x 3/4" bolts & lock nuts.

Once attached square up the bench and fully tighten any previous bolts.



STEP 7

Mount the front top support brace to the front side of the leg assemblies. Use (8) 1/4-20 x 3/4" bolts & lock nuts.

Once attached square up the bench and fully tighten any previous bolts.

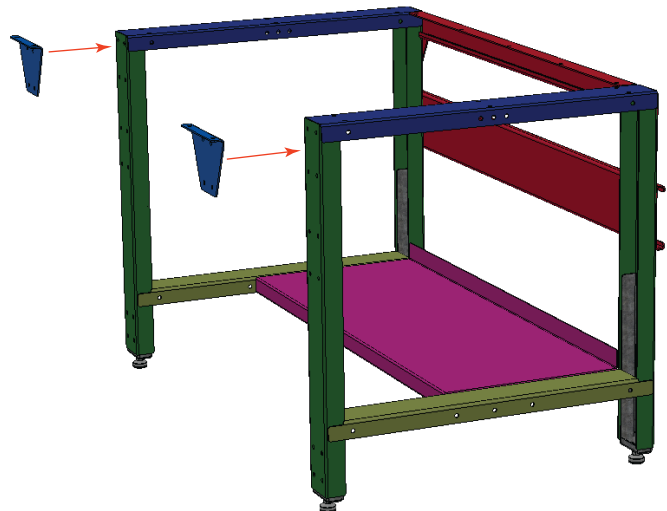
Note: For benches 60" wide and under two top support brackets will be provided rather than a full width support.



Full Width Support (72"W & Over)



Two Support Brackets (60"W & Under)



STEP 8

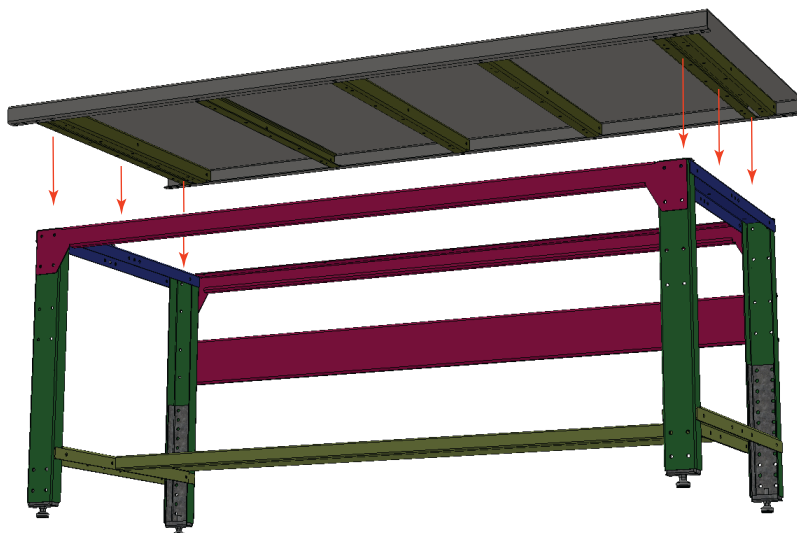
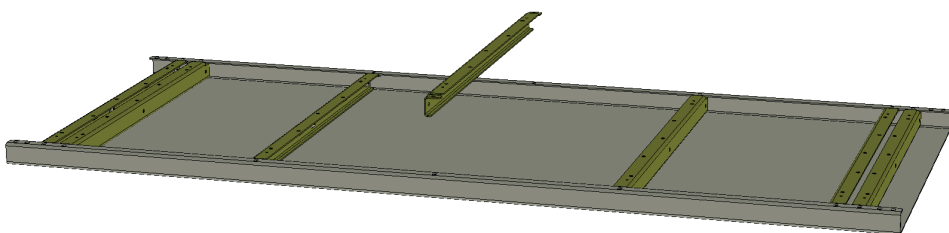
STEEL TOPS w/ NO WOOD CORE

On a clean blanket or pad to keep from scratching the top, flip the top bottom side up on the blanket.

Insert the supplied support brackets, see cut away image for normal positioning of braces. Brace qty will vary depending on top width.

With the top bottom side up the side of the bracket with the threaded holes should be facing up. The brackets will slide under the lip on the underside of the top. Attach the brackets to the top using (2) 1/4-20 x 3/4" flange head bolts per bracket threaded into the pre-installed nuts on the brackets.

Once all brackets are attached, carefully flip the top onto the rest of the bench assembly. Line up the holes in the top of the leg assembly with the pre-installed nuts in the top support brackets. Attach using (6) 1/4-20 x 3/4" flange head bolts per leg. Finger tighten at first. Once all legs are installed go back and fully tighten all the bolts in this Step 7.



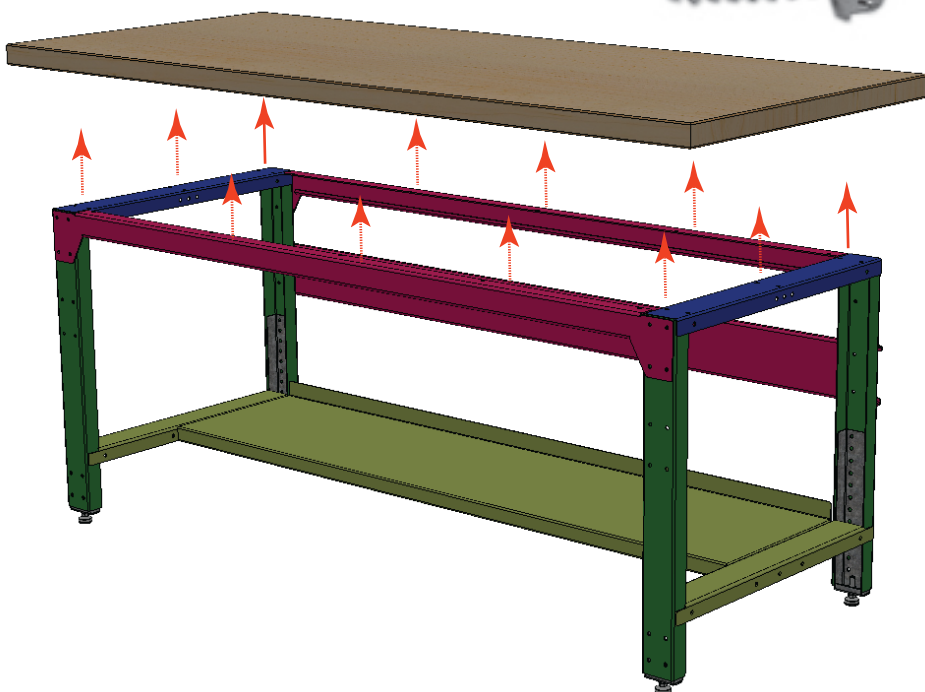
1/4-20 x 3/4"
Flange Head Bolt

STEP 8

SOLID WOOD OR WOOD CORED STEEL TOP

Place the top right-side up onto the base. Center top both left-to-right and front-to-back.

Attach top to base using #14 Lag screws using the holes in the top of the leg assemblies and the front and rear top supports braces.



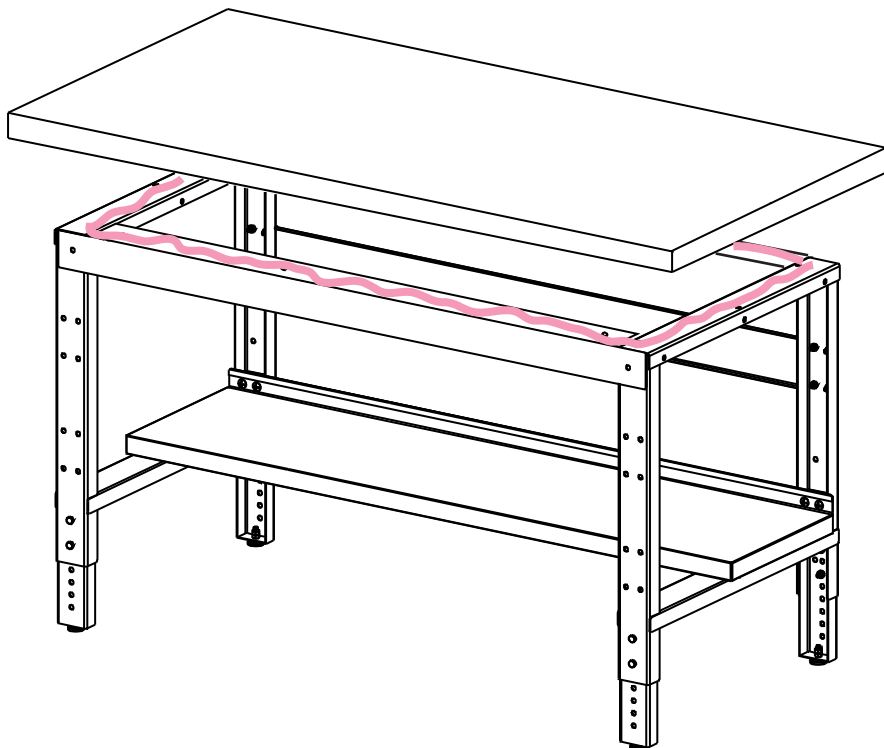
STEP 8

OPTIONAL EPOXY TOPS

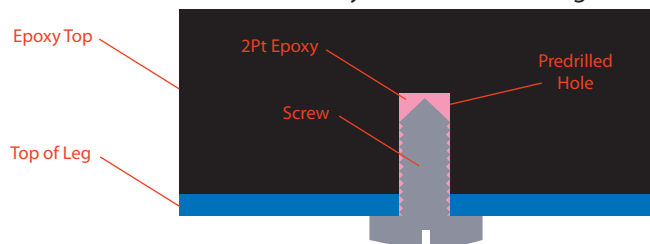
Epoxy tops are held in place on the workbench using a two part epoxy to adhere the underside of the top with the top surfaces of the benches legs and supports. It is recommended that the paint be removed from the top surfaces so the epoxy will be coming in contact with the metal itself and not just the paint. Follow the instructions on the epoxy packaging provided. Apply the epoxy to the top surfaces of the bench assembly. Place the top right-side up onto the base. Center top both left-to-right and front-to-back as its lowered onto the epoxy. Take care that the top is lowered closely into its final position to minimize smearing the epoxy.

Note:

For standard benches it is recommended (highly recommended for mobile benches) that the tops also be screwed down. Pre-drilling holes will be necessary to install screws into the underside of the epoxy top due to its hardness. The holes should be drilled just slightly smaller than the size of the screws to be inserted so the screws just barely grip inside the drilled holes. Next fill the holes with the two part epoxy before inserting the screws, once hardened the screws will be locked into place.



Cut-Away for Screw Mounting



STEP 9

OPTIONAL UNDER SURFACE DRAWER

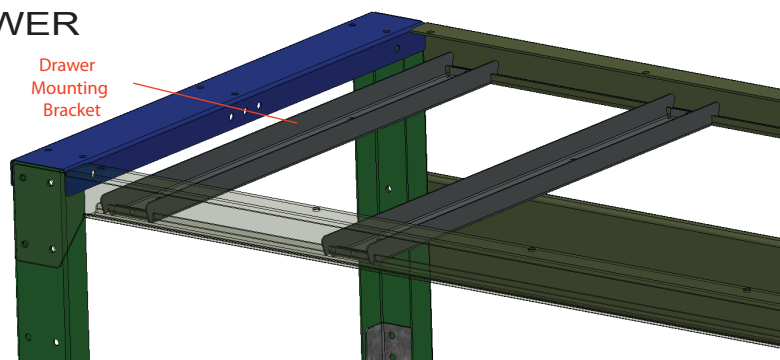
Insert the two drawer mounting brackets into the front and rear top support braces. The brackets have notches that will hang on the lower lip of the braces.

Remove the drawer from the drawer box and set aside. Using (4) 1/4-20 x 1/2" flange head bolts, attach the drawer box to the mounting brackets. Holes in the top of the drawer box will line up with pre-installed nuts on the brackets. Do not fully tighten.

Note: Assistance to hold the box in place will make this step easier.

Once the drawer is in its desired position, tighten the bolts. Tightening the bolts will cause the bracket and drawer box to clamp down on the braces to hold it in place. If desired, the mounting brackets can be screwed directly to the top support braces using a self-tapping screw through the holes on each end of the bracket.

Reinstall the drawer.



1/4-20 x 1/2"
Flange Head Bolt

