

## TEAR DOWN BENCHES

### TOOLS REQUIRED FOR ASSEMBLY

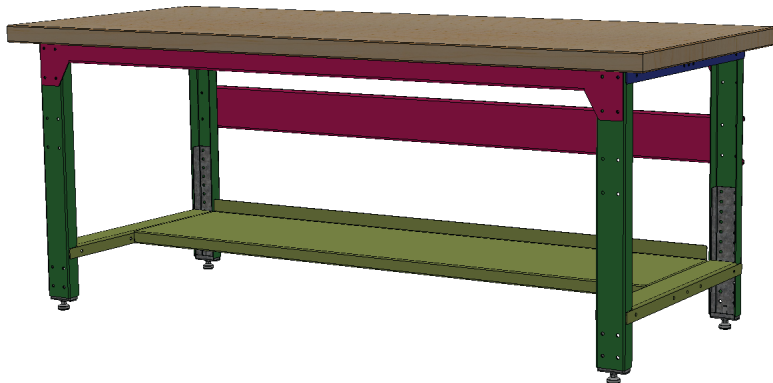
Socket set, Open end wrench set, Cordless drill with 3/8" socket bit (Magnetic recommended).

### BEFORE ASSEMBLY

Read through the assembly instructions to familiarize yourself with the order in which the parts are assembled. We suggest that you clear & vacuum the area where the bench is to be assembled. It is important that the bench is assembled in the same sequence as instructed.

### HARDWARE

All assembly hardware is provided.



## STEP 1

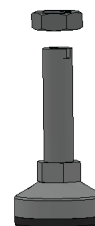
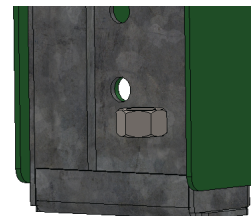
### LEVELER KIT OPTION

**\*\*SKIP THIS STEP IF YOU HAVE NOT PURCHASED THE LEVELER OPTION\*\***

Thread 1 thin nut onto the leveler.

Place leveler into floor-mount hole at the base of the leg or the base of the insert if its an adjustable height bench. Thread the top nut onto the leveler.

Loosen & tighten nuts to adjust the height of your work bench.



## STEP 2

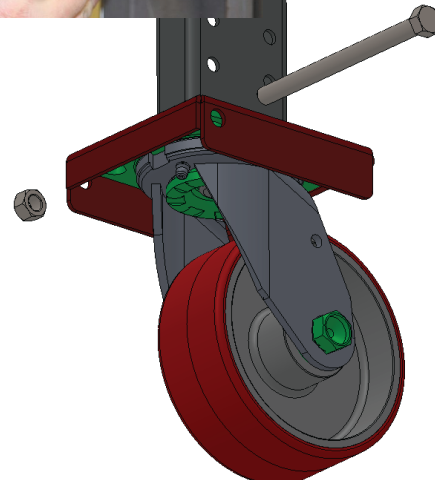
### MOBILE CASTER KIT OPTION

**\*\*SKIP THIS STEP IF YOU HAVE NOT PURCHASED THE CASTER OPTION\*\***

Attach the single bolt casters to the bottom of the legs or the base of the insert if its an adjustable height bench..

**NOTE: TWO TYPES OF CASTERS ARE PROVIDED (SWIVEL AND FIXED) BE SURE TO USE TWO OF THE SAME TYPE AT EACH END OF THE BENCH (TWO SWIVEL CASTERS ON THE RIGHT AND TWO FIXED ON THE LEFT). ALSO BE SURE THE FIXED CASTERS ARE POSITIONED SO THE GREASE ZERK IS ACCESSIBLE FROM THE OUTSIDE OF THE BENCH (SEE FIG. 2). IF ALL SWIVEL CASTERS ARE ORDERED, PLACEMENT WILL NOT BE IMPORTANT.**

Insert the top of the caster into the angled lip pocket (this will be the side opposite of the bolt holes), tilt the caster flat against the mounting plate until the bolt is able to be slid behind the caster, locking it in place. Bolt in place using (1) 3/8" x 4-3/4" long hex head bolt and 3/8" nylock nut. Repeat steps for the other caster locations.



Nylock Nut



3/8" x 4-3/4"  
Flange Head Bolt

## STEP 3

### ADJUSTABLE HEIGHT

**\*\*SKIP THIS STEP IF YOU HAVE NOT PURCHASED THE ADJUSTABLE HEIGHT OPTION\*\***

Attach the galvanized adjustable upright inserts to the leg at desired height.

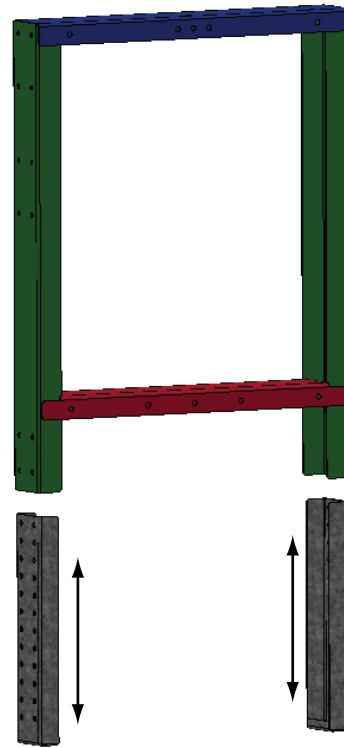
Use (4) 5/16 x 3/4" Bolts with Lock Nuts per insert.



5/16-18 x 3/4"  
Hex Head Bolt



Nylock Nut



## STEP 4

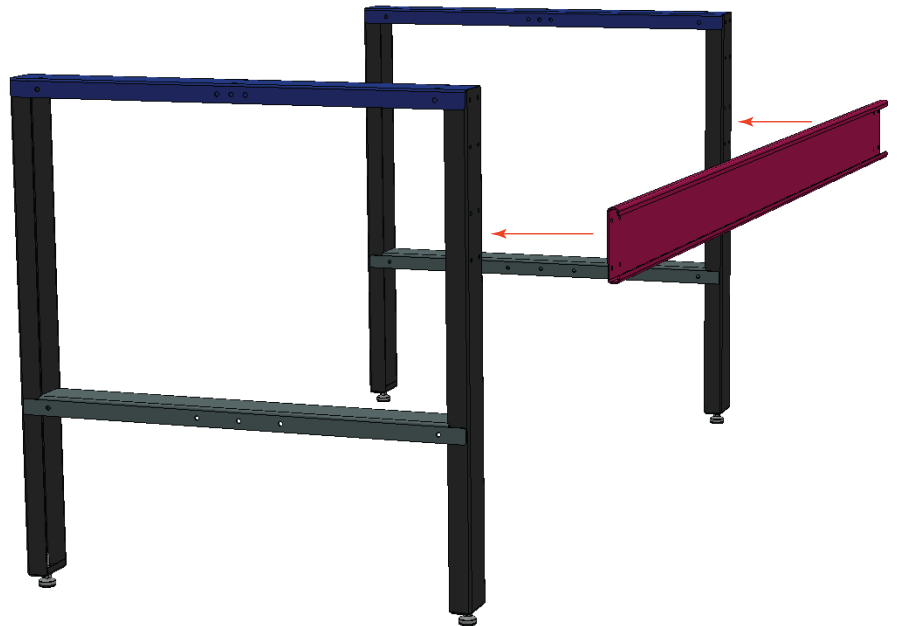
Using (8) 1/4-20 x 3/4" Bolts & Lock Nuts, attach the back brace to each leg assembly. NOTE: Mount the flat side of brace to back side of the legs. Do not fully tighten bolts.



1/4-20 x 3/4"  
Hex Head Bolt



Nylock Nut



## STEP 5

### LOWER SHELF OPTION (continue if not purchased)

Slide shelf into place between the two leg assemblies. Two mounting holes on the ends of the shelf will line up with holes on the sides of each lower leg brace.

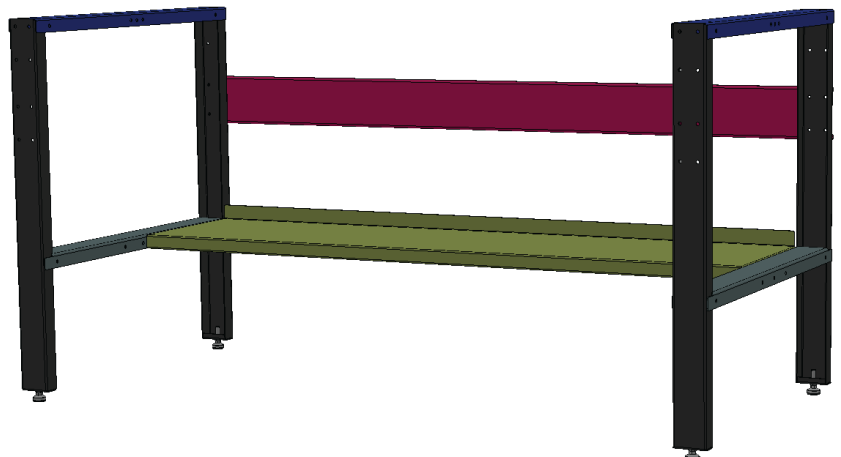
Use (4) 1/4-20 x 3/4" Bolts & Lock Nuts to attach the shelf to the legs.



1/4-20 x 3/4"  
Hex Head Bolt



Nylock Nut



## STEP 6

Mount the rear top support brace to the back side of the leg assemblies. Use (8) 1/4-20 x 3/4" bolts & lock nuts.

Once attached square up the bench and fully tighten any previous bolts.



## STEP 7

Mount the front top support brace to the front side of the leg assemblies. Use (8) 1/4-20 x 3/4" bolts & lock nuts.

Once attached square up the bench and fully tighten any previous bolts.

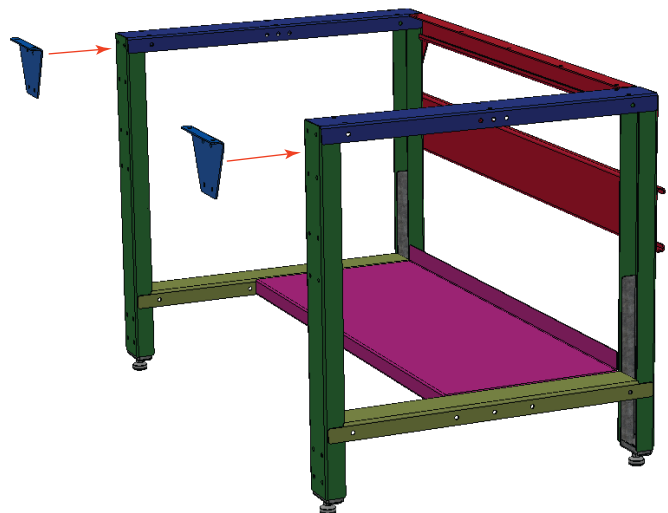
Note: For benches 60" wide and under two top support brackets will be provided rather than a full width support.



Full Width Support (72"W & Over)



Two Support Brackets (60"W & Under)



## STEP 8 Tear Down Bench Top

The bottom side of the benches top will have a set of angle brackets on each end. Lower the top down over the tops of the leg assemblies. Line up the holes in the top brackets with the holes in the leg assemblies.

Attach the top brackets to the legs using 5/16-18 x 3-1/2" hex head bolts and nylock nuts.

Once the top is mounted in place, insert the perforated top pan into the bottom side of the top.



5/16-18 x 3-1/2"  
Flange Head Bolt



Nylock Nut

