

BT BENCH ASSEMBLY INSTRUCTIONS

TOOLS REQUIRED FOR ASSEMBLY

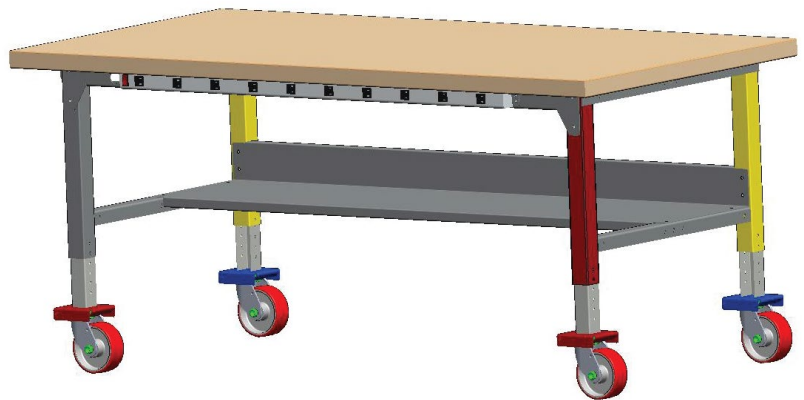
Socket set, Open end wrench set, Cordless drill with 3/8" socket bit (Magnetic recommended).

BEFORE ASSEMBLING THE WORKBENCH

Assembly of this bench will require 2 people. Read through the assembly instructions to familiarize yourself with the order in which the parts are assembled. We suggest that you clear & vacuum the area where the bench is to be assembled. It is important that the bench is assembled in the same sequence as instructed.

HARDWARE

All assembly hardware is provided.



STEP 1 MOBILE CASTER KIT OPTION

****SKIP THIS STEP IF YOU HAVE NOT PURCHASED THE CASTER OPTION****

Attach the single bolt casters to the bottom of the legs or the base of the insert if its an adjustable height bench..

NOTE: TWO TYPES OF CASTERS ARE PROVIDED (SWIVEL AND FIXED) BE SURE TO USE TWO OF THE SAME TYPE AT EACH END OF THE BENCH (TWO SWIVEL CASTERS ON THE RIGHT AND TWO FIXED ON THE LEFT). ALSO BE SURE THE FIXED CASTERS ARE POSITIONED SO THE GREASE ZERK IS ACCESSIBLE FROM THE OUTSIDE OF THE BENCH (SEE FIG. 2). IF ALL SWIVEL CASTERS ARE ORDERED, PLACEMENT WILL NOT BE IMPORTANT.

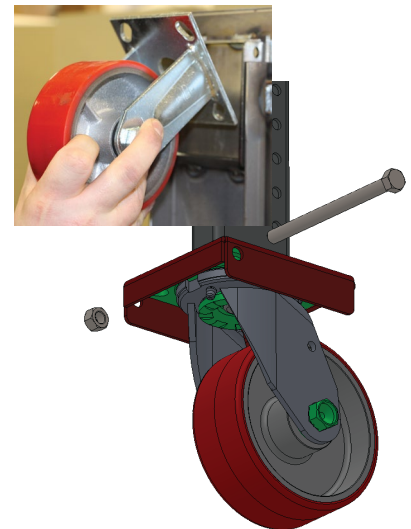
Insert the top of the caster into the angled lip pocket (this will be the side opposite of the bolt holes), tilt the caster flat against the mounting plate until the bolt is able to be slid behind the caster, locking it in place. Bolt in place using (1) 3/8" x 4-3/4" long hex head bolt and 3/8" nylock nut. Repeat steps for the other caster locations.



Nylock Nut



3/8" x 4-3/4"
Flange Head Bolt



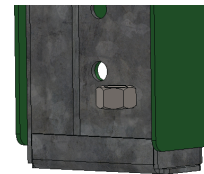
STEP 1 LEVELER KIT OPTION

****SKIP THIS STEP IF YOU HAVE NOT PURCHASED THE LEVELER OPTION****

Thread 1 thin nut onto the leveler.

Place leveler into floor-mount hole at the base of the leg or the base of the insert if its an adjustable height bench. Thread the top nut onto the leveler.

Loosen & tighten nuts to adjust the height of your work bench.



STEP 2

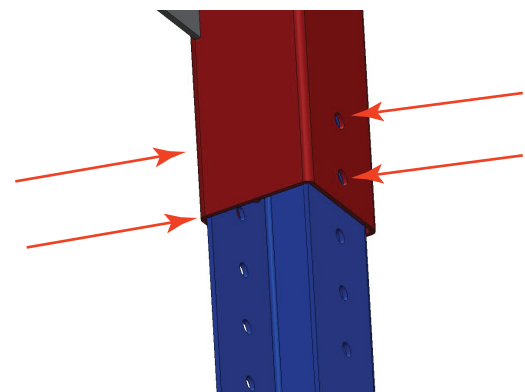
Insert the lower portion of the adjustable height leg into the top portion of the leg.

The lower insert has pre-drilled starter holes that will line up with holes in the lower section of the leg assembly.

Adjust the legs to the desired height. Secure the two pieces together at the desired height using (4) thread forming screws per leg.



Thread Forming
Screw

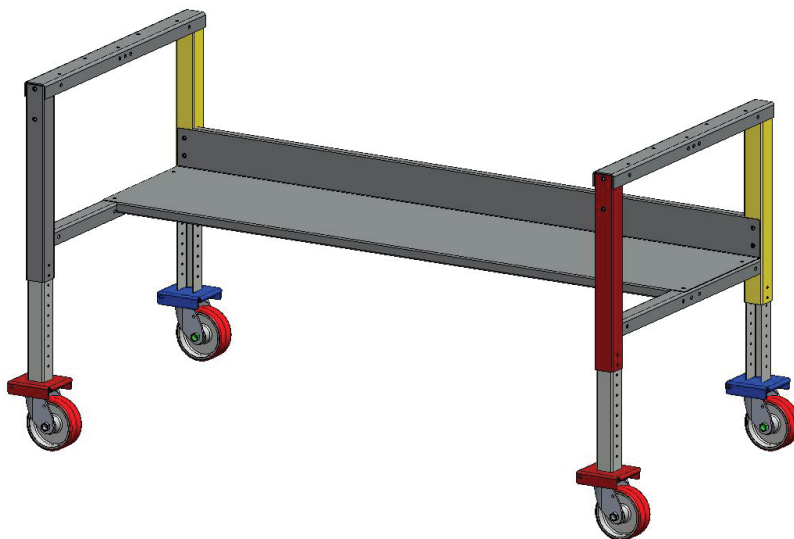


STEP 3

LOWER SHELF OR LOWER BRACE

For either a lower brace or shelf (depending on bench purchased) Use (4) 1/4-20 x 3/4" flange bolts threaded into the pre-installed inserts on the back side of the leg assembly.

For a lower shelf attach using (4) 1/4-20 x 3/4" flange bolts insert the bolt through the horizontal cross member and secure using (4) Nylock Nuts.



1/4-20 x 3/4"
Flange Head Bolt



1/4-20 x 3/4"
Flange Head Bolt



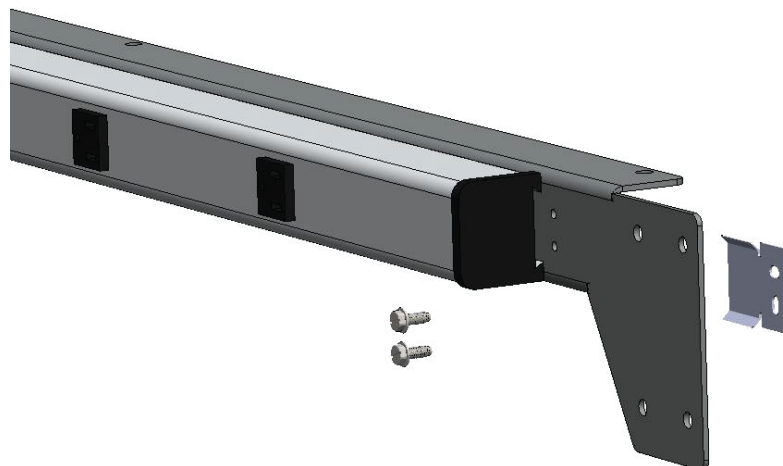
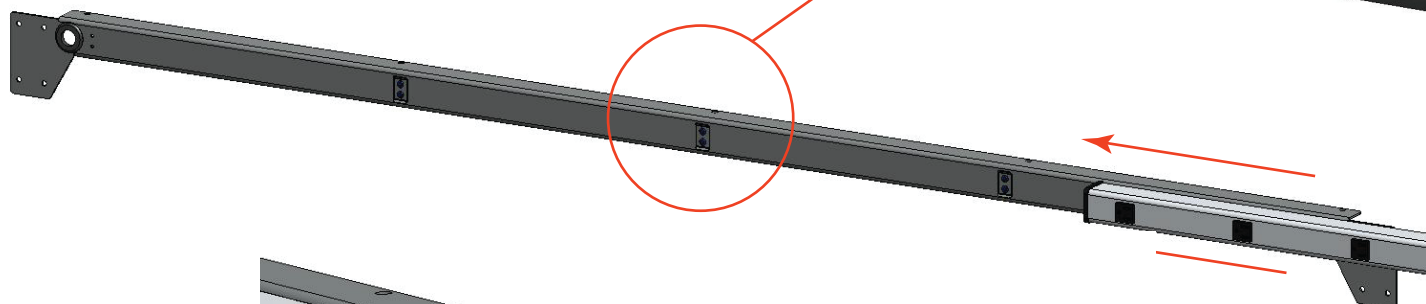
Nylock Nut

STEP 4

SKIP IF NO POWER APRON PURCHASED:

For benches with the lower front power apron it will be easier to mount the apron prior to attaching the support brace to the front of the legs.

There are clips that need to be attached to the face of the brace first. The clips are held on with #8-32x1/2" pan head screws and nylock nuts. Once installed carefully slide the power apron over the clips, starting at one end until centered.



#8-32x1/2
PAN HEAD SCREW



Nylock Nut

STEP 5

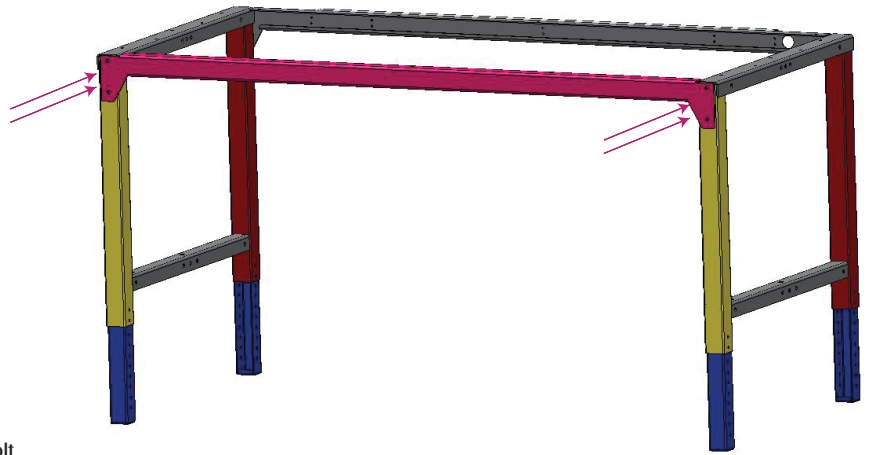
Attach top support braces to the front & back of each leg.
Note: Some benches will only require one back brace depending on the width and type of top purchased.

Use (4) 1/4-20 x 3/4" bolts per supplied brace.

Once braces are attached, fully tighten the 8 bolts for the shelf.



1/4-20 x 3/4"
Flange Head Bolt



STEP 6

STEEL TOPS w/ NO WOOD CORE

On a clean blanket or pad to keep from scratching the top, flip the top bottom side up on the blanket.

Insert the leg mounting brackets into the top. With the top bottom side up the side of the bracket with the threaded holes should be facing up. The brackets will slide under the lip on the underside of the top. Attach the brackets to the top using (4) 1/4-20 x 3/4" flange head bolts per bracket threaded into the pre-installed nuts on the brackets. Do not fully tighten.

Next install the center top supports in the same way as the leg mounting brackets. These will mount using (2) 1/4-20 x 3/4" flange head bolts per bracket threaded into the pre-installed nuts on the brackets.

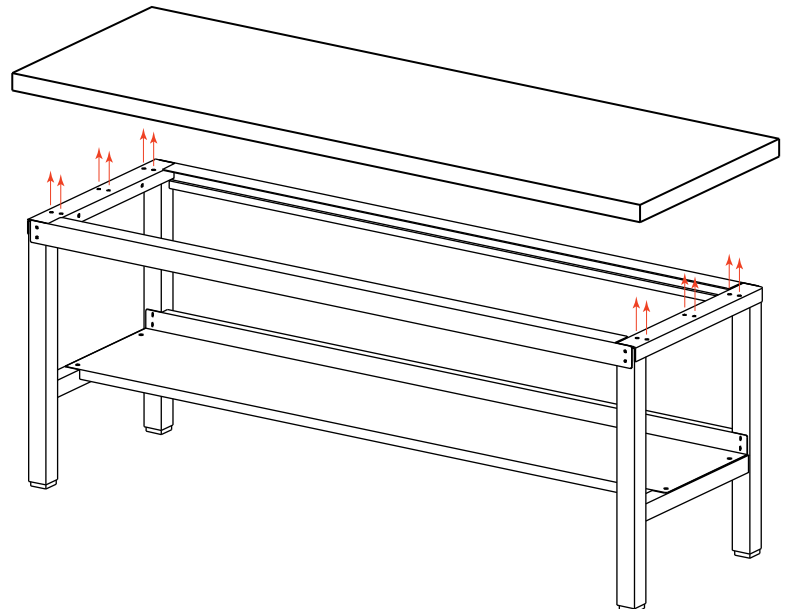
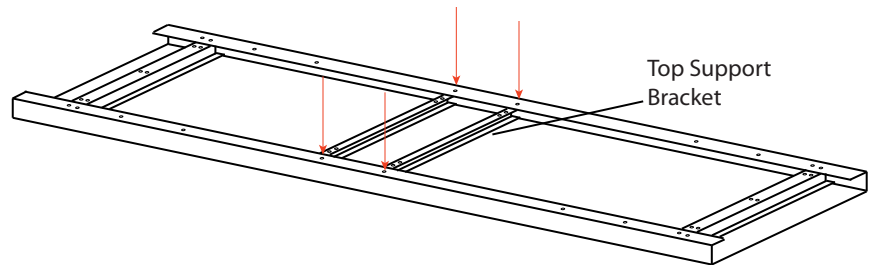
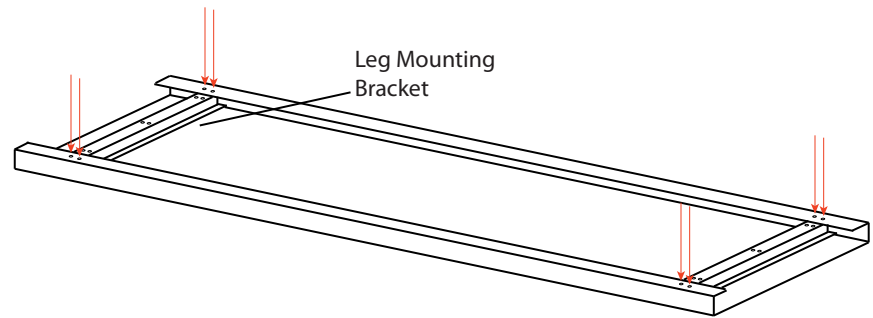
NOTE: The support brackets are also used to attach the optional under mount drawer. Holes are provided to position the bracket so the drawer can be mounted on center, left or right sides.

Once all top brackets are installed, flip the top over and position it on the leg assembly. Line up the holes in the top of the leg assembly with the pre-installed nuts in the leg mounting brackets.

Attach using (6) 1/4-20 x 3/4" flange head bolts per leg. Finger tighten at first. Once all legs are installed go back and fully tighten all the bolts in this step.



1/4-20 x 3/4"
Flange Head Bolt



STEP 6 WOOD TOPS or WOOD CORED STEEL

Set the top on the assembled base. Center the top both front-to-back and left-to-right.

Attach the top to the legs using #14 x 1" Lags.

If front and back braces are provided attach to the top using additional #14 x 1" Lags.



#14 x 1"
Lag Bolt



OPTIONAL UNDER SURFACE DRAWER

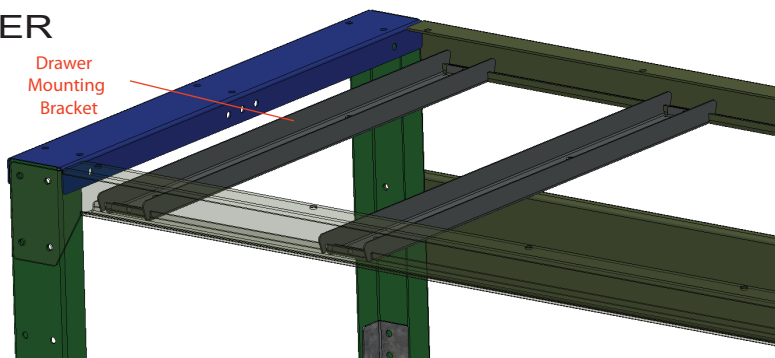
Insert the two drawer mounting brackets into the front and rear top support braces. The brackets have notches that will hang on the lower lip of the braces.

Remove the drawer from the drawer box and set aside. Using (4) 1/4-20 x 1/2" flange head bolts, attach the drawer box to the mounting brackets. Holes in the top of the drawer box will line up with pre-installed nuts on the brackets. Do not fully tighten.

Note: Assistance to hold the box in place will make this step easier.

Once the drawer is in its desired position, tighten the bolts. Tightening the bolts will cause the bracket and drawer box to clamp down on the braces to hold it in place. If desired, the mounting brackets can be screwed directly to the top support braces using a self-tapping screw through the holes on each end of the bracket.

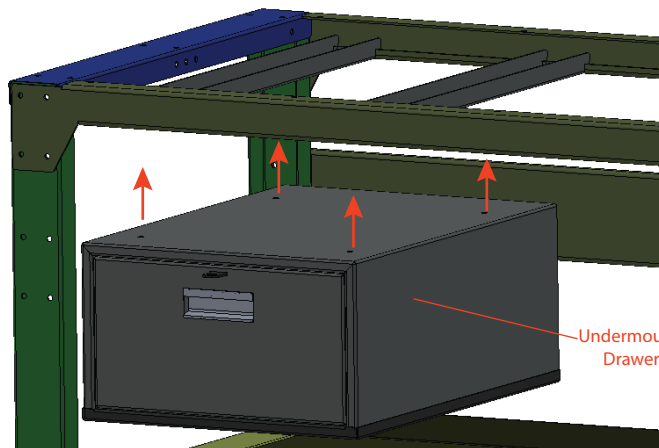
Reinstall the drawer.



Drawer
Mounting
Bracket



1/4-20 x 1/2"
Flange Head Bolt



Undermount
Drawer

STEP 7 - Drawer Option

STEP 8 - Foot Brace

If purchased attach the lower tube foot brace to the leg assemblies. Bolt the brace in place using (4) 1/4-20 X 3/4" Flange head bolts. These will thread into pre-installed threaded inserts on the inside of the lower leg support. The cross tube of the leg will be pre-drilled for the bolts.



1/4-20 x 3/4"
Flange Head Bolt

