

## ELR-100 ASSEMBLY INSTRUCTIONS

### TOOLS REQUIRED FOR ASSEMBLY

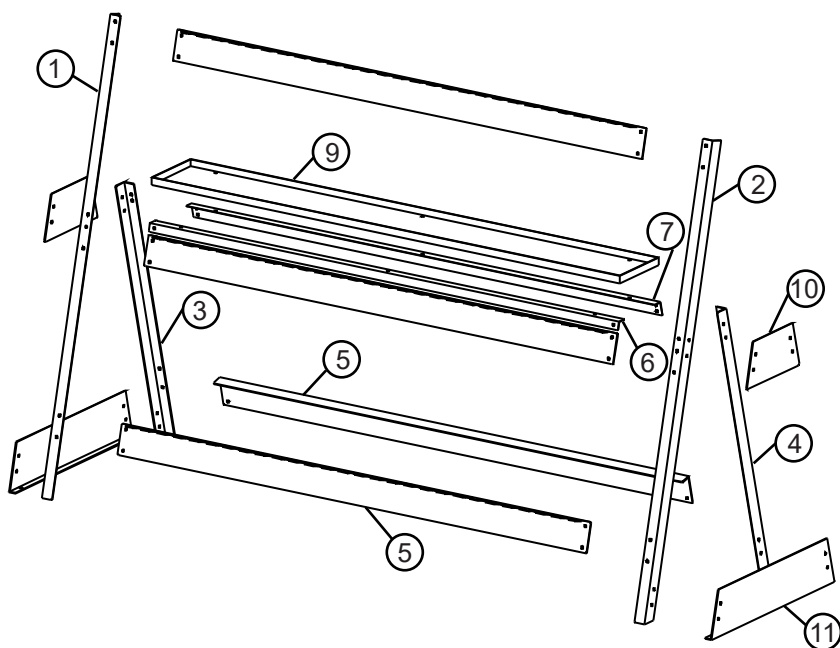
1/2 Socket and wrench, 1/2 open-end wrench.

### BEFORE ASSEMBLING THE RACK

Read through the assembly instructions to familiarize yourself with the order in which the parts are assembled. It is important that the rack is assembled in the same sequence as instructed. We suggest that you clear & vacuum the area where the rack is to be assembled.

### HARDWARE

All assembly hardware is provided.



### COMPONENTS

Item#	Qty.	Description
1	1	Left Front Upright
2	1	Right Front Upright
3	1	Left Back Upright
4	1	Right Back Upright
5	4	Clamp Rail
6	1	Front Shelf Rail
7	1	Back Shelf Rail
9	1	Shelf
10	2	Side Bracket
11	2	Caster Bracket

## STEP 1

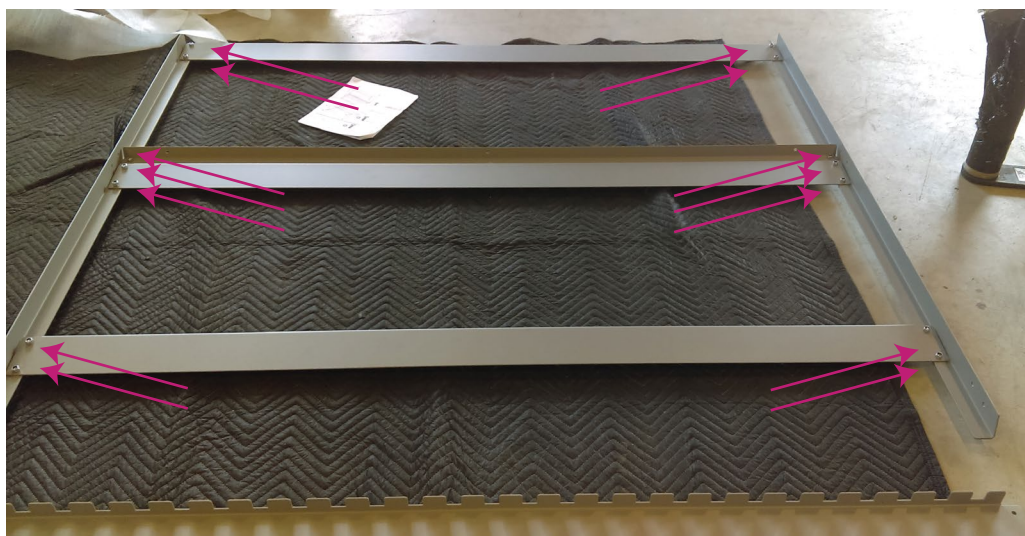
Lay the left and right uprights face down on a blanket or other clean surface. Attach the front shelf rail (above center clamp rail), and the three toothed clamp rails to the uprights as pictured to the back sides of the uprights. Bolt together using (14) 5/16 x 3/4" bolts and lock nuts.



5/16-18 x 3/4"  
Hex Head Bolt



Nylock Nut



## STEP 2

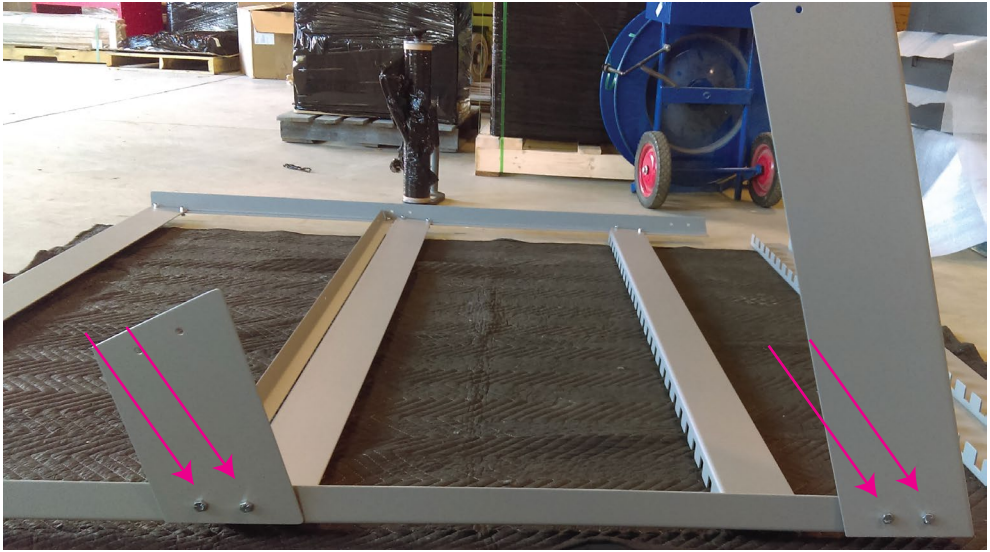
Attach the side brackets to the left and right uprights.  
Use (8) 5/16 x 3/4" Bolts & Lock Nuts.



5/16-18 x 3/4"  
Hex Head Bolt



Nylock Nut



## STEP 3

Attach the left and right back uprights to the side brackets

Use (8) 5/16 x 3/4" Bolts & Lock Nuts.

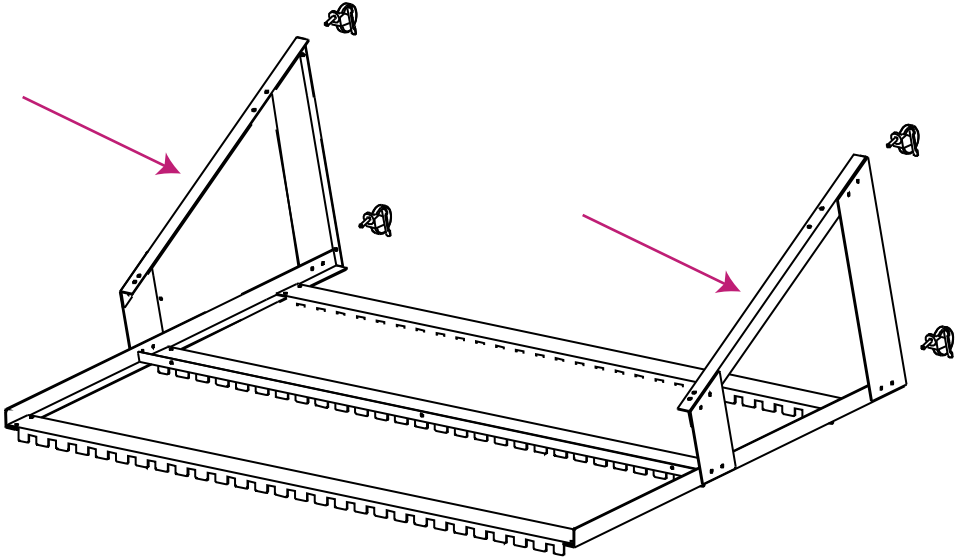
Thread casters into the caster plates.



5/16-18 x 3/4"  
Hex Head Bolt



Nylock Nut



## STEP 4

Attach the rear shelf support brace to the rear uprights. Use (2) 5/16 x 3/4" bolts.



5/16-18 x 3/4"  
Hex Head Bolt



Nylock Nut





## STEP 5

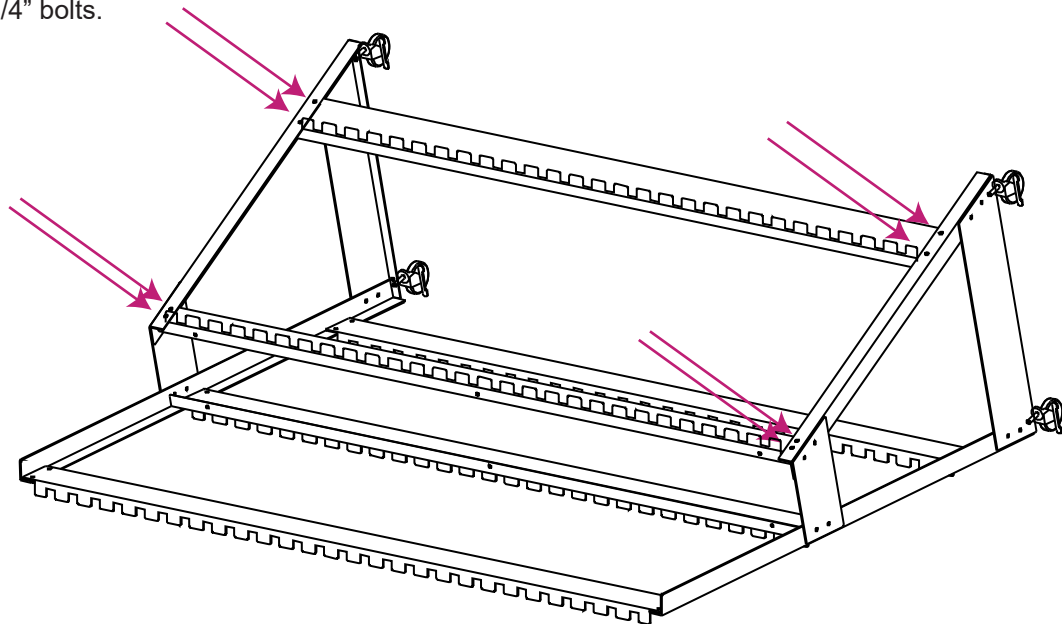
Attach the rear cross rack sections to the rear set of uprights. Use (8) 5/16 x 3/4" bolts.



5/16-18 x 3/4"  
Hex Head Bolt



Nylock Nut



## STEP 6

With assistance set the rack upright on its wheels.

Set the top shelf in place on the shelf support brackets and bolt in place using (6) 5/16 x 3/4" Bolts & Lock Nuts.

Ensure all bolts are full tightened.  
The rack is now fully assembled



5/16-18 x 3/4"  
Hex Head Bolt



Nylock Nut

